



U.S. General Services Administration

**GSA Climate & Infrastructure Program Management Office
U.S.-Mexico Joint Advisory Committee on Air Quality
BOTA Land Port of Entry**



**Presented by:
Charlie Hart, Southern Border Executive**

June 15, 2023



History/Background

Project Overview & Scope

Current Status

Schedule

Site Considerations

Potential Approaches

Community Engagement

Opportunities & Challenges

History/Background

Chamizal Treaty signed in 1963; LPOE Built in 1967; Connects w/ Mexican Port of “Cordova”

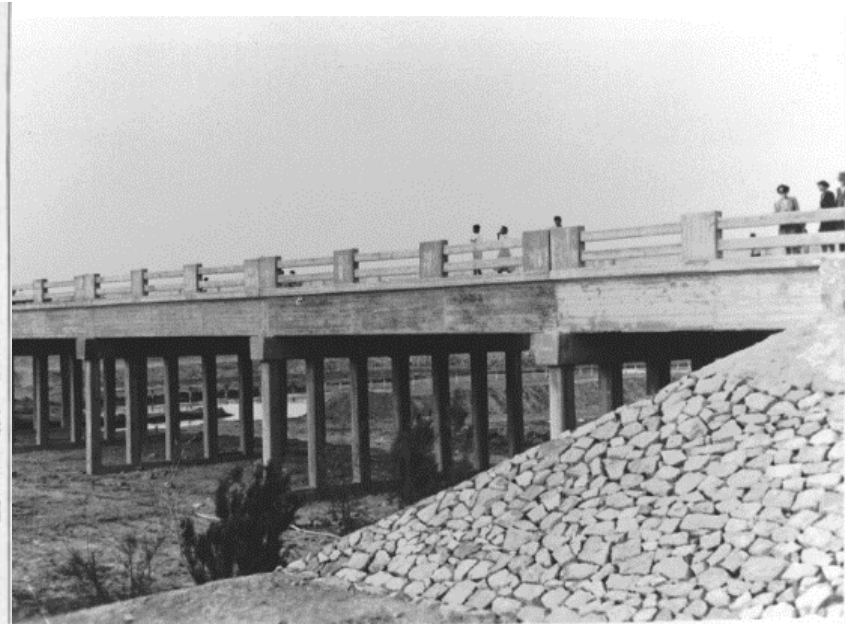
Toll-free bridge: pedestrians, cars, buses, & commercial trucks

Renovated in 2003; Existing Site is 27 acres; fully developed urban site; landlocked;



PROCLAIM NEW BOUNDARY — President Johnson and President Diaz Ordaz sign proclamation that the boundary was changed, ending the long Cham-

izal dispute Saturday in Juarez, Mexico. The signing took place at the Chamizal Memorial Monument.



1950

Project Overview

Goals & Objectives - Fully modernized and expanded facility. Improve CBP operations and reduce wait times; Minimize impact on the community

Scope - Design and construction of modern facilities and site layout resulting in more efficient pedestrian and vehicular traffic flow through the port

Operations – Phased construction to enable port operation during construction



Current Status

- NEPA Environmental Impact Statement (EIS) is required
- Currently meeting with community leaders, seeking input
- The Enhanced Feasibility Study (EFS) will be complete in September 2023; Design will commence upon completion of the EFS.
- Community engagement meetings shared information on:
 - potential approaches,
 - environmental issues
 - small business opportunities,
 - community concerns

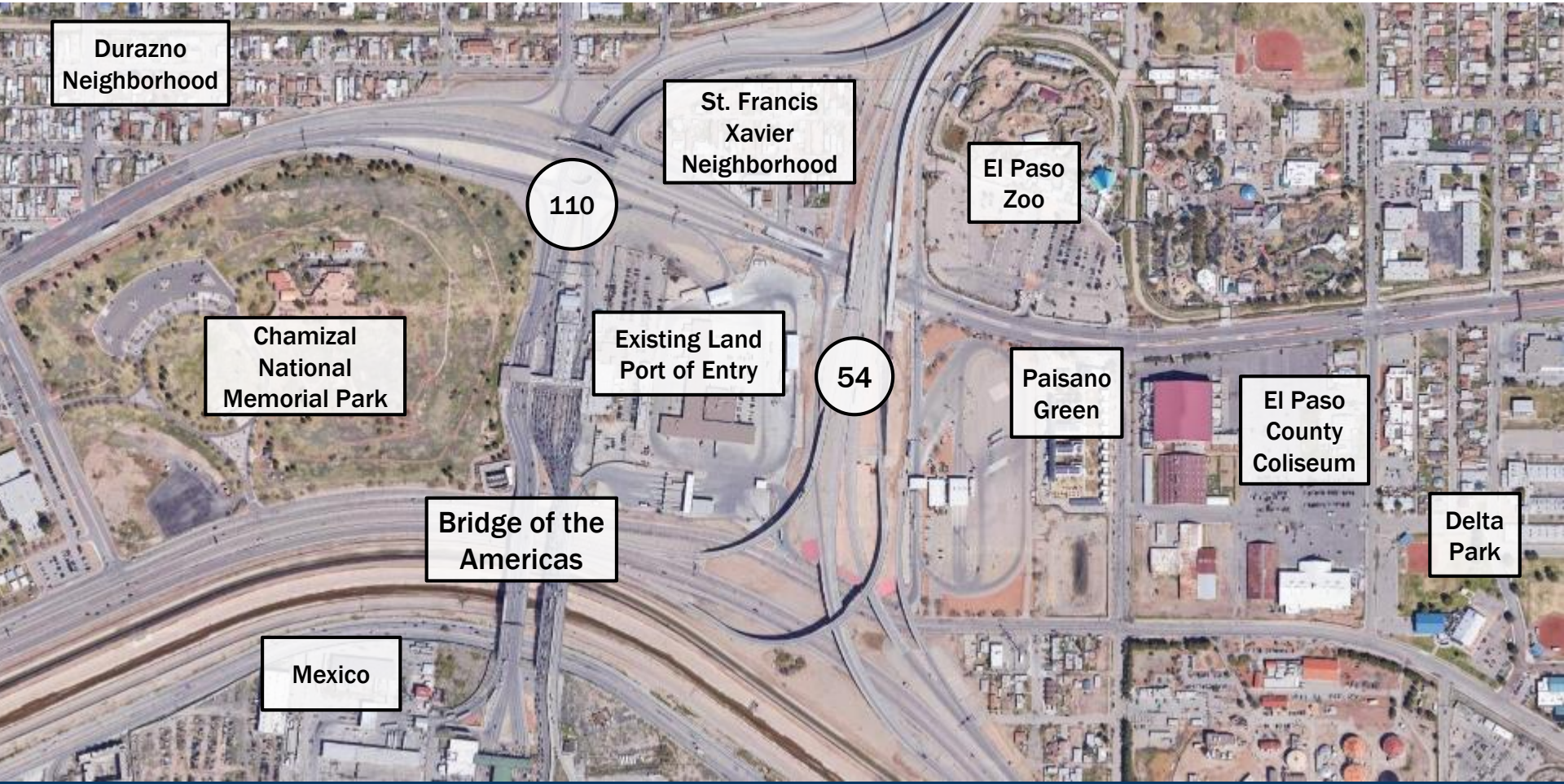


Schedule

- Enhanced Feasibility Study (EFS) : Oct 2022-Sep 2023
- Public Meetings for NEPA: Summer 2023 through 2024
- Design : Apr 2026- Mar 2028 (Possible acceleration to Jan 2025)
- Construction (Phasing to enable operation): Aug 2028 – June 2031
(possible acceleration to 2026-2029)



Site Considerations



Durazno
Neighborhood

St. Francis
Xavier
Neighborhood

El Paso
Zoo

110

Chamizal
National
Memorial Park

Existing Land
Port of Entry

54

Paisano
Green

El Paso
County
Coliseum

Delta
Park

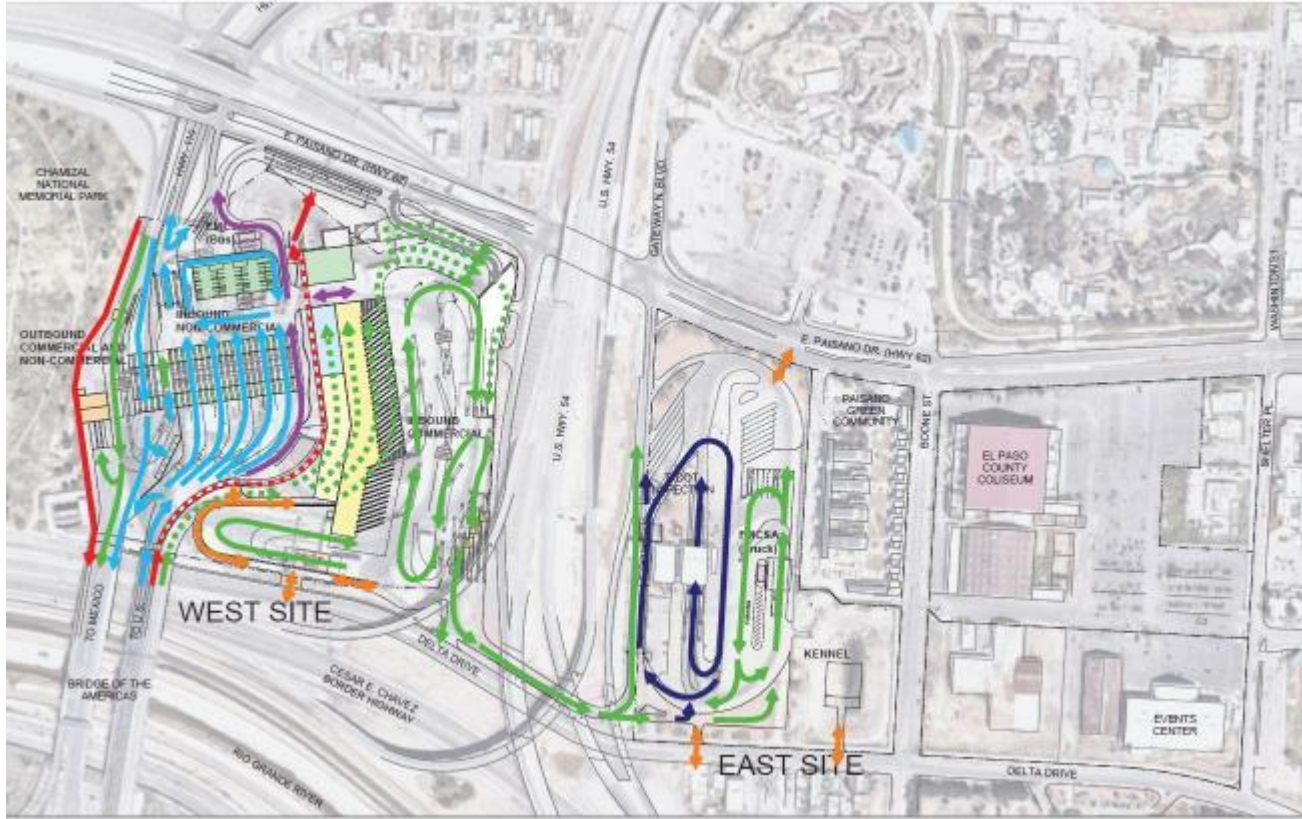
Bridge of the
Americas

Mexico

Alternative Approaches

1. Use existing site; Multi-level facilities
2. Acquire land to accommodate future growth; Administrative functions and commercial vehicle secondary inspection separated from primary inspection areas.
3. Acquire land to enable complete segregation of commercial vehicle inspection from other activities.
4. Elimination of commercial vehicle inspection facilities







Alternative 1a



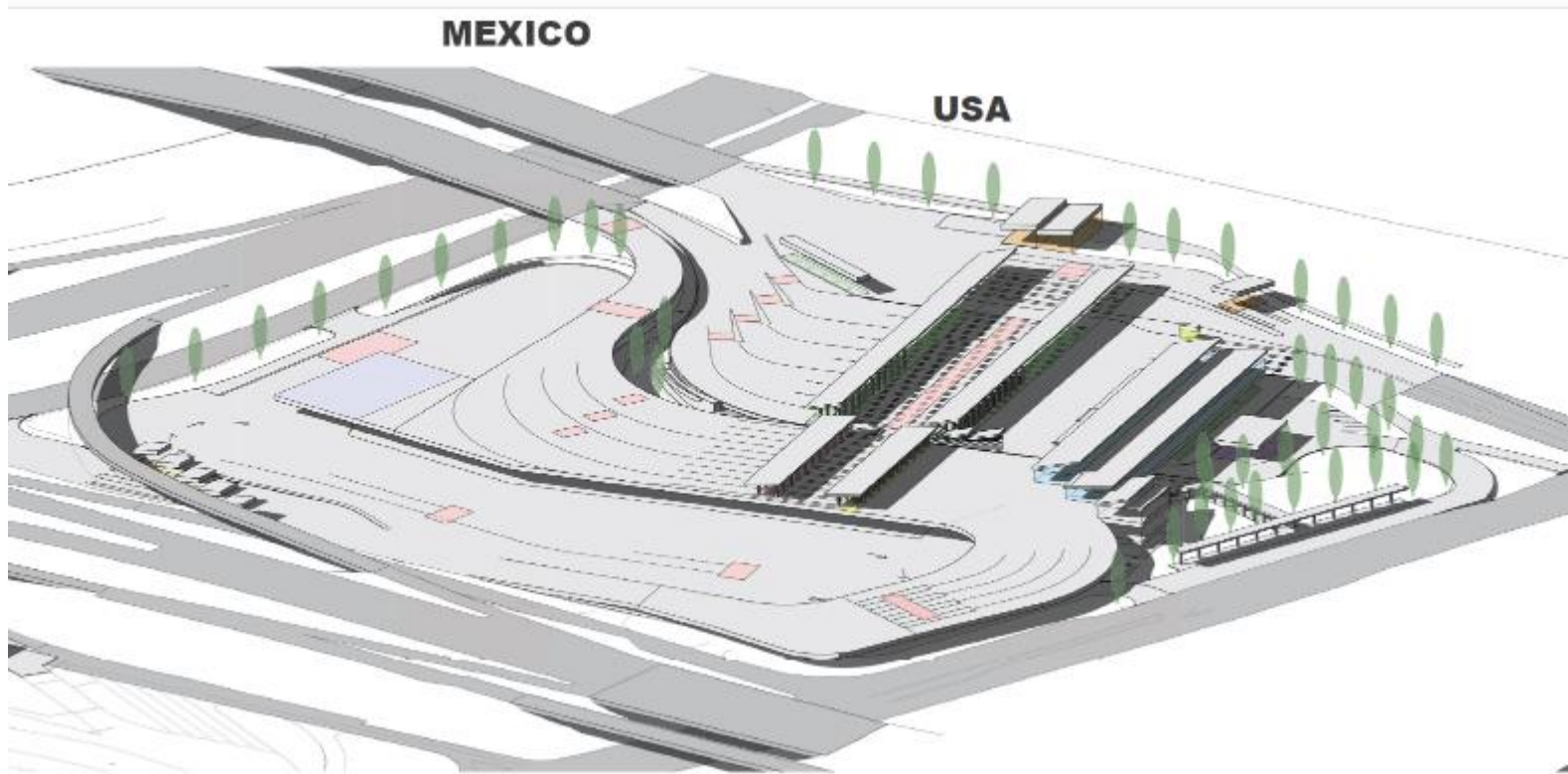
Use existing site;

Multi-level facilities

TRAVEL PATHS

-  PEDESTRIAN
-  NON-COMMERCIAL
-  COMMERCIAL
-  BUS
-  VISITOR/SERVICE
-  STAFF
-  TxDOT

Alternative 1a Roof Level View



Community Engagement

Summer 2023 - NEPA Scoping Process (public meetings to be scheduled)

Monthly –

El Paso Bridges Steering Committee;
UTEP BOTA Air Quality Assessment Project

Quarterly – Community Engagement Meetings

Annually(+) -

Binational Bridges & Border Crossings Group (BBBXG)
US-Mexico Joint Advisory Committee on Transportation Issues (JWC)

Semiannually – US-Mexico Joint Advisory Committee (JAC) on Air Quality



Opportunities

- LEED Gold
- Carbon free electricity ; PV panels for electricity
- Net Zero Opportunity
 - Net Zero Ready
 - Renewables
 - Emerging Technology
 - Electric car charging stations
 - Passive lighting/building orientation
 - Electrochromatic Glass
 - Building Thermal Envelope
- Small and Disadvantaged Business opportunities



LAND PORTS OF ENTRY AND THE BIPARTISAN INFRASTRUCTURE LAW



Land Ports of Entry

A Land Port Of Entry (LPOE), or border station, provides controlled entry to or departure from the United States for persons or materials. It houses U.S. Customs and Border Protection (CBP) and other federal inspection agencies responsible for the enforcement of federal laws pertaining to such activities. LPOEs provide a mix of safety and security for travelers and trade.

Currently, there are 167 LPOEs at America's borders. All are operated by CBP, and 122 LPOEs are under the custody and control of GSA.

Contacts

[GSA Press](#)



Bipartisan Infrastructure Law and LPOEs

The Bipartisan Infrastructure Law is an investment in our nation's infrastructure and competitiveness. The law provides funding for LPOE modernization projects that will create new good-paying jobs, bolster safety and security, and make our economy more resilient to supply chain challenges – all while serving as models for sustainability and innovation.



Bipartisan Infrastructure Law (BIL)

Climate & Infrastructure

Program Management Office

Charlie Hart
Southern Border Executive
Charlie.Hart@gsa.gov

U.S. General Services Administration

