

# **SOUTH CENTRAL**

---

**ENVIRONMENTAL RESOURCE CENTER**  
A THRIVING COMMUNITIES TECHNICAL ASSISTANCE CENTER

# TCTAC Background



# Background on TCTAC Program

The Thriving Community Technical Assistance (TCTAC) program was created by the U.S. EPA, in partnership with the U.S. DOE, to ensure that communities equitably receive the technical assistance they need to benefit from funding directed under the Justice40 initiative.



# South Central TCTAC



# A Partnership with Purpose

Building Thriving Communities  
FOR ALL | PARA TODOS



# South Central Partnership Network – Founding Members

NM Congressional Delegation

NM Economic Development Department  
*Eight Northern Indian Pueblos Council Inc.*  
Albuquerque Hispano Chamber of Commerce  
NM Indian Resource Development Program

The City of Las Cruces

Mesilla Valley Public Housing

*The City of New Orleans*

NM Energy, Minerals, and Natural Resources Dept.

*NM Environment Department*

Las Cruces Green Chamber of Commerce  
The Global Hemp Association of Oklahoma  
Together Louisiana



# Technical Assistance Focus Areas



## Grant Assistance

Provide training to support community-based grant writing and grant management



## Building Leadership Capacity

Create cohorts of community and business leaders to advance “equity at work” framework.



## Increase Access

Provide technical assistance that fosters thriving communities for all.



## Community Engagement

Ensure communities are actively engaged in the co-development of environmental and energy justice.

# Building a Network of Technical Assistance Resources



*Supporting rural, remote, Tribal and disinvested communities.*

# South Central TCTAC Technical Assistance Services

## Grant assistance

- Guidance, identification, navigation, clarification, and understanding

## Training on Grants Administration

- Apply, compile, budget, and manage grant opportunities. Inform on grant regulations, procedures, programmatic requirements.

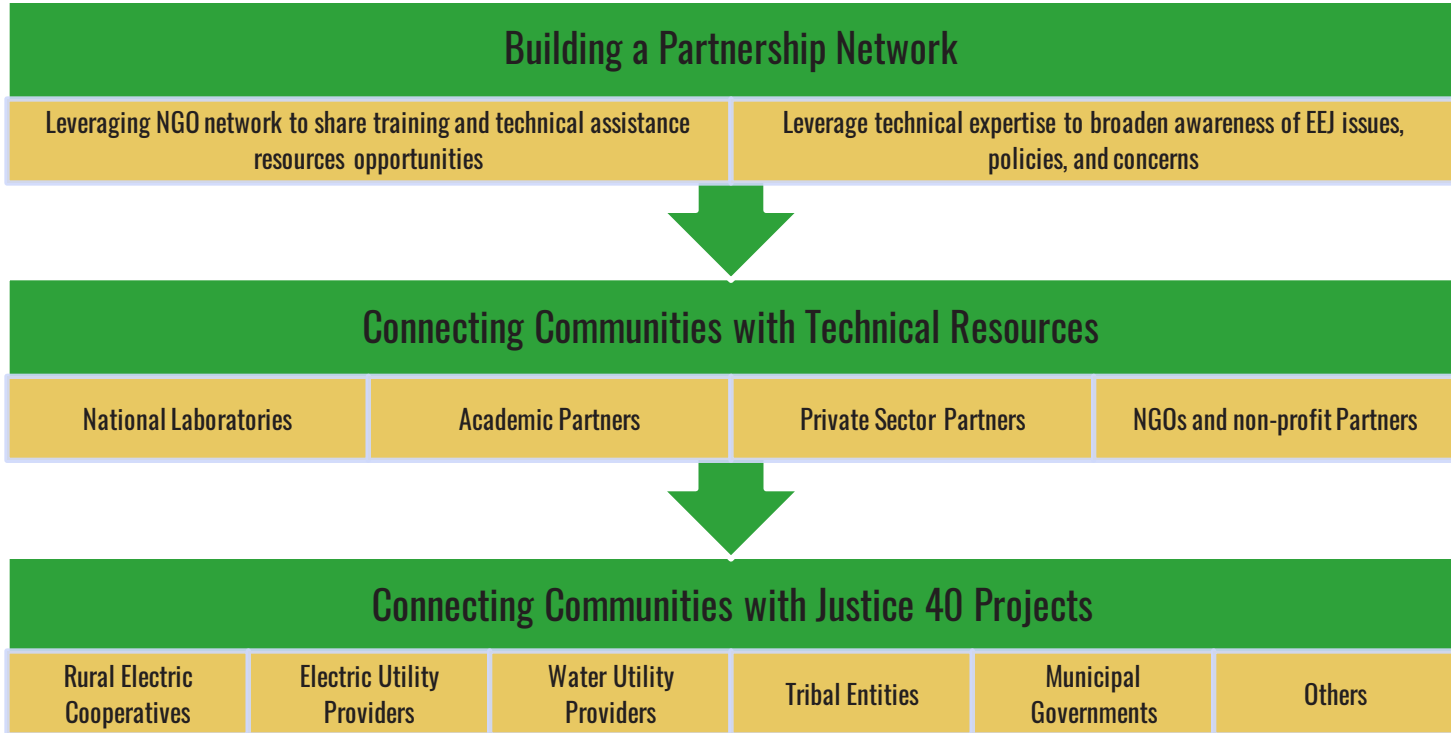
## Capacity-Building for Organizational Growth and Program Development

- Support identification of environmental issues; connect communities with specialized support; and help build organizational capacity.

## Growing Partnerships

- Facilitate community engagements; build partnerships across groups.

# Building Coalitions and Partnerships



# Building Leadership Capacity

## Business and Organizational Development



**Beloved**  
COMMUNITY

- Equity in Communities Cohort
- Cohort brings together leadership teams from EJ communities (local, county, regional, state) for a nine-month equity journey
- Monthly capacity building sessions (virtual)
- Curriculum committee comprised of community-based organizations, academic leaders, and non-governmental agencies



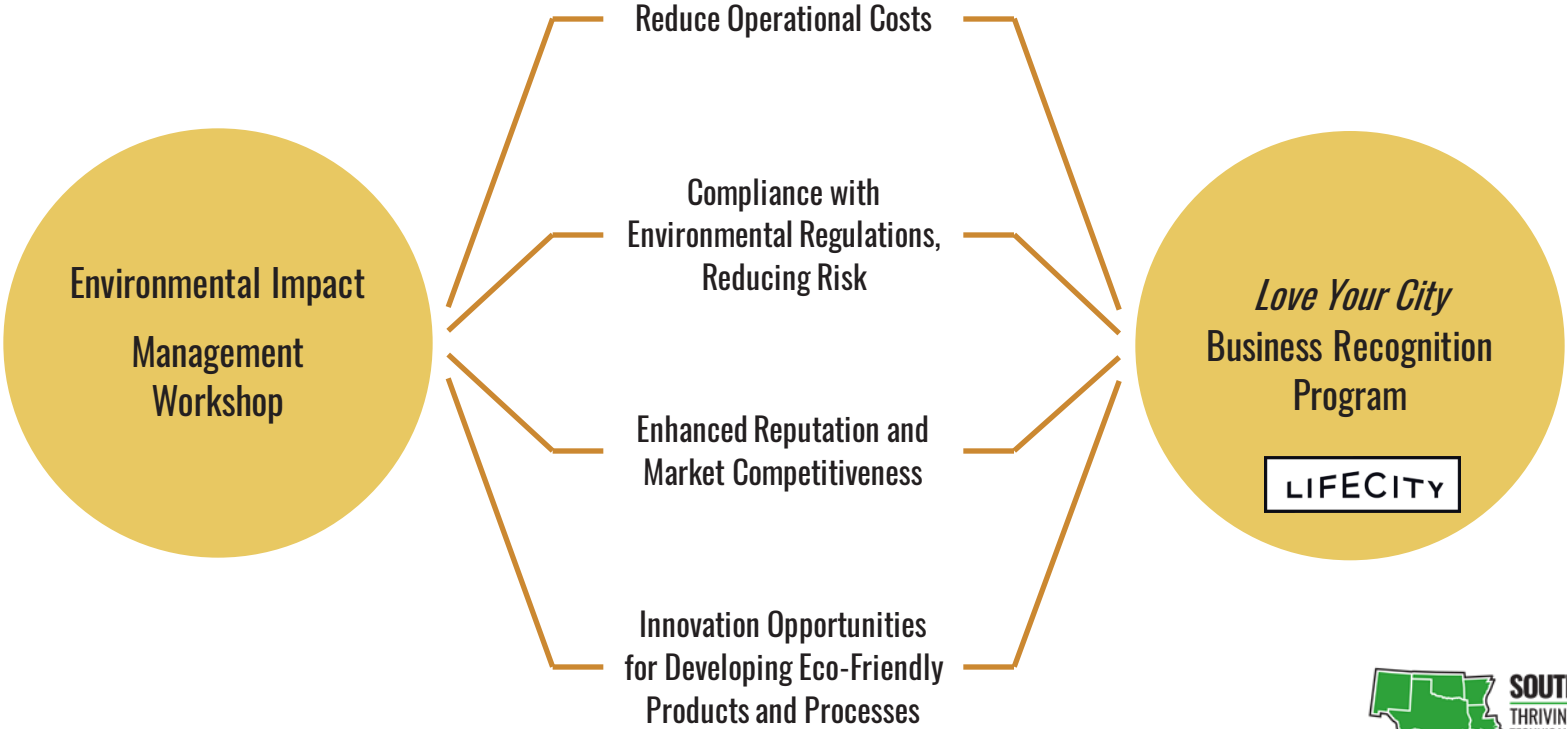
## Community Leadership Development

- Equity in Communities Cohort
- Cohort brings together leadership teams from EJ communities (local, county, regional, state) for a nine-month equity journey
- Monthly capacity building sessions (virtual)
- Curriculum committee comprised of community-based organizations, academic leaders, and non-governmental agencies



**SOUTH CENTRAL**  
THRIVING COMMUNITIES  
TECHNICAL ASSISTANCE CENTER

# Building a Clean, Equitable Business Ecosystem





**SOUTH CENTRAL**  
THRIVING COMMUNITIES  
TECHNICAL ASSISTANCE CENTER

**Building Thriving Communities  
FOR ALL | PARA TODOS**

Contact us to Request Technical Assistance



**scerc@nmsu.edu**



**(575) 646-2913**



**scerc.nmsu.edu**