

# Paso del Norte Air Quality Report | June 15, 2023

Dr. Carlos Rincon, US EPA Region 6



# \*Overview

- Current air monitoring networks
- January - April 2023 data by pollutant with design values for each country
- Open discussion

# Paso del Norte Air Monitoring Stations

## El Paso del Norte Airshed Air Quality Monitors

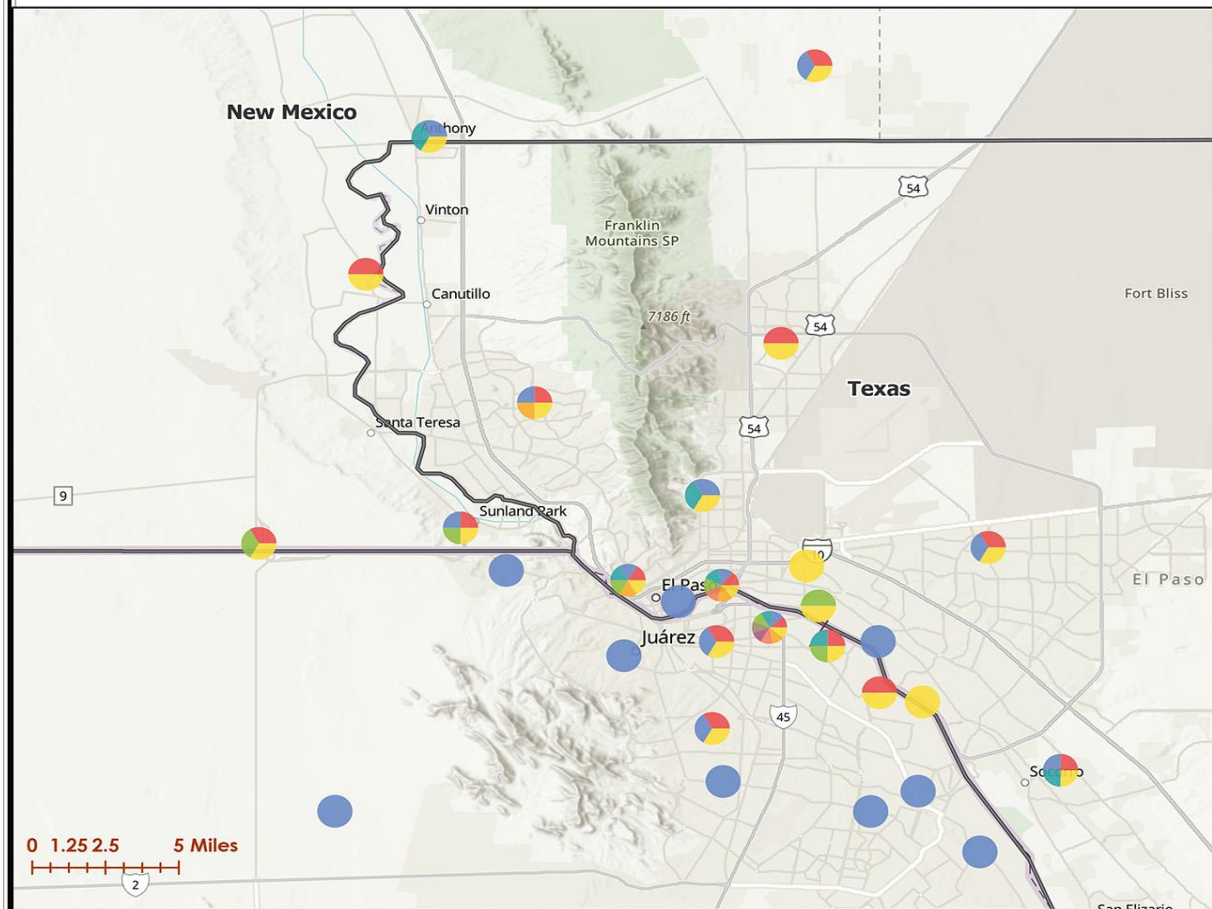
April 2021

Map Requested by TCEQ Office of Air



Protecting Texas by  
Reducing and  
Preventing Pollution

Texas Commission on Environmental Quality  
GIS Team (Mail Code 197)  
P.O. Box 13087  
Austin, Texas 78711-3087  
Date: 6/24/2022  
CRF: 0073203  
Cartographer: CHoddePi

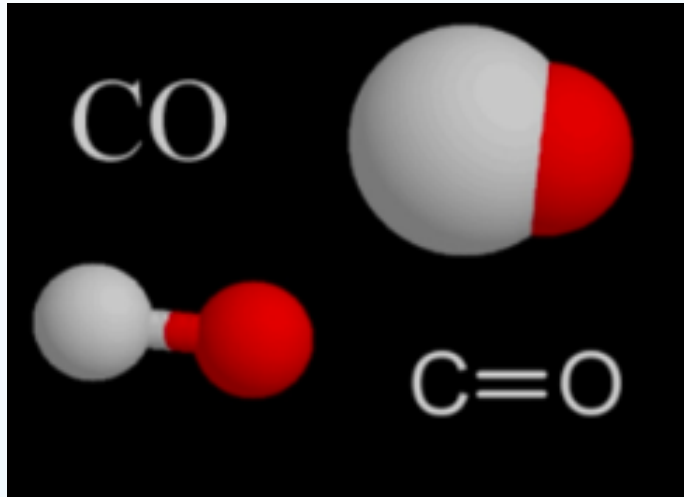


- Ozone
- PM 10
- PM 2.5
- NO<sub>2</sub>
- NO<sub>x</sub>
- NO
- SO<sub>2</sub>
- CO
- Met



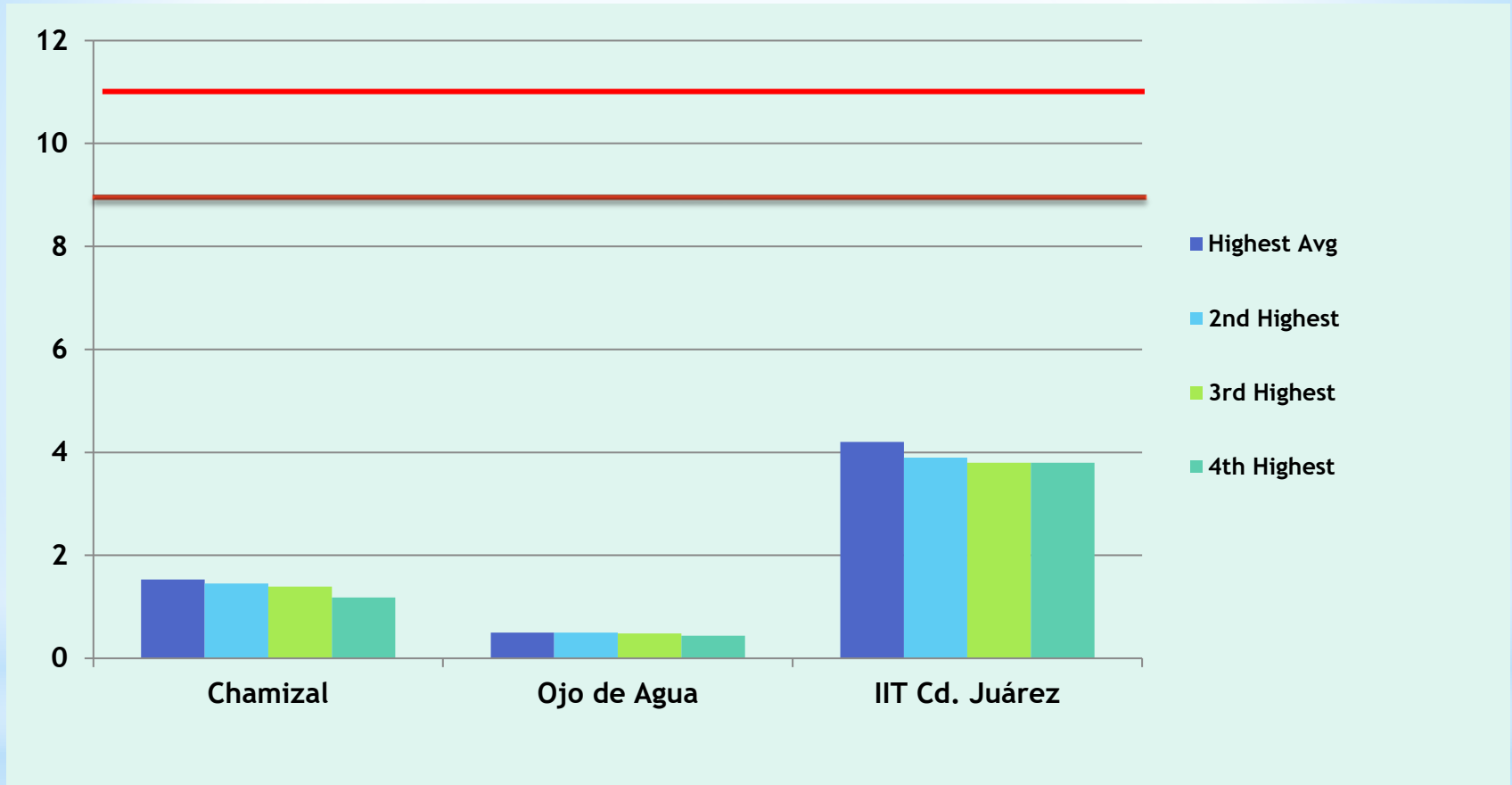
Source: The location of the facility was provided by the TCEQ Office of Air.

This map was generated by the Information Resources Division of the Texas Commission on Environmental Quality. This product is for informational purposes and may not have been prepared for or be suitable for legal, engineering, or surveying purposes. It does not represent an on-the-ground survey and represents only the approximate relative location of property boundaries. For more information concerning this map, contact the Information Resource Division at (512) 239-0800.



\* Carbon monoxide (CO)  
Monóxido de carbono

## CO 8 Hr. Averages Four Highest Values in (ppm) El Paso and Ciudad Juárez (January - April 2023)



The **U.S. federal standard, 9.0 ppm**, is violated when more than one reading at the same monitor in one calendar year is at or above that value.

The **Mexico federal standard** is a highest allowable limit of **11 ppm**.

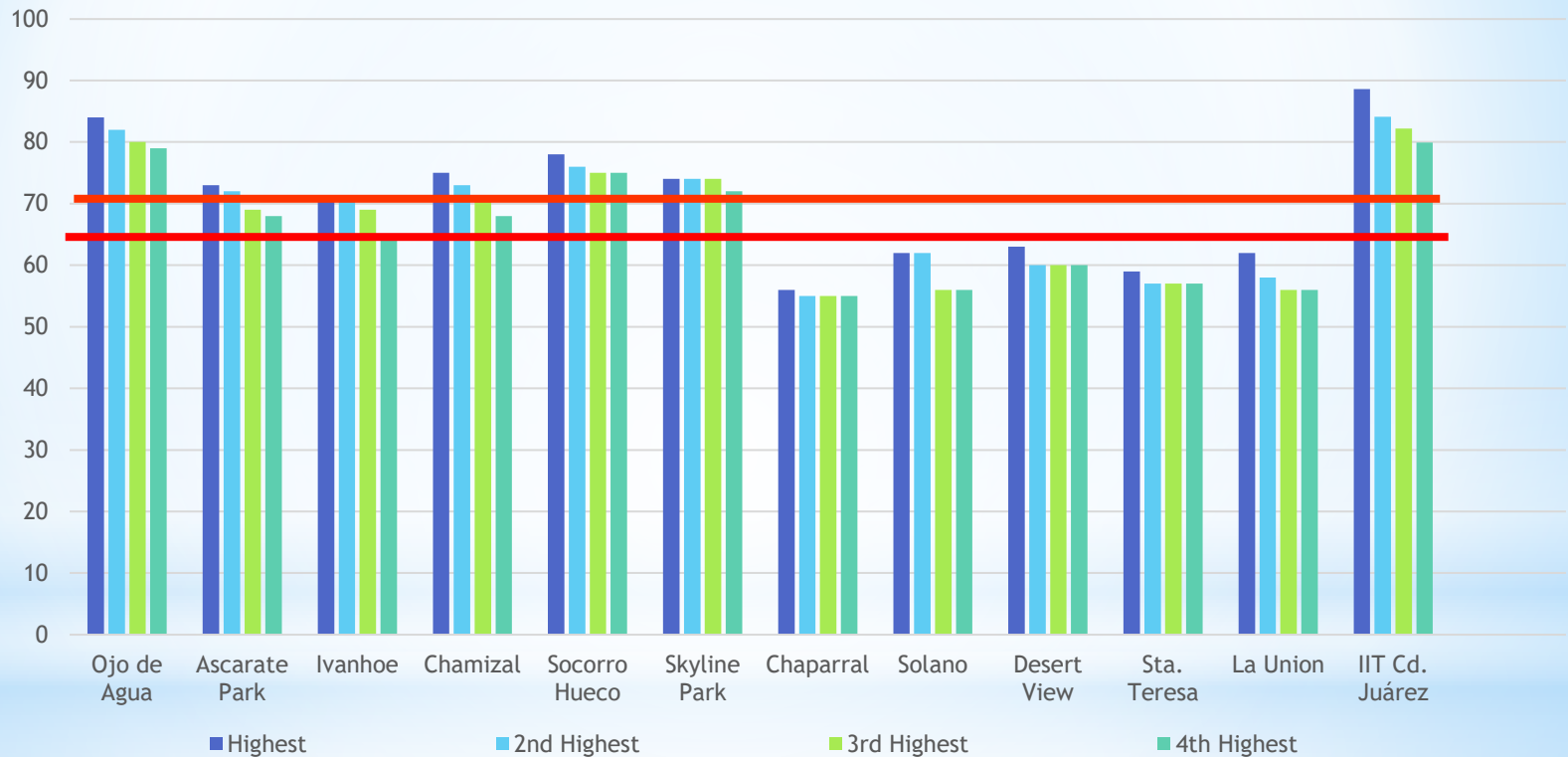


\* Ozone ( $O_3$ )  
Ozono

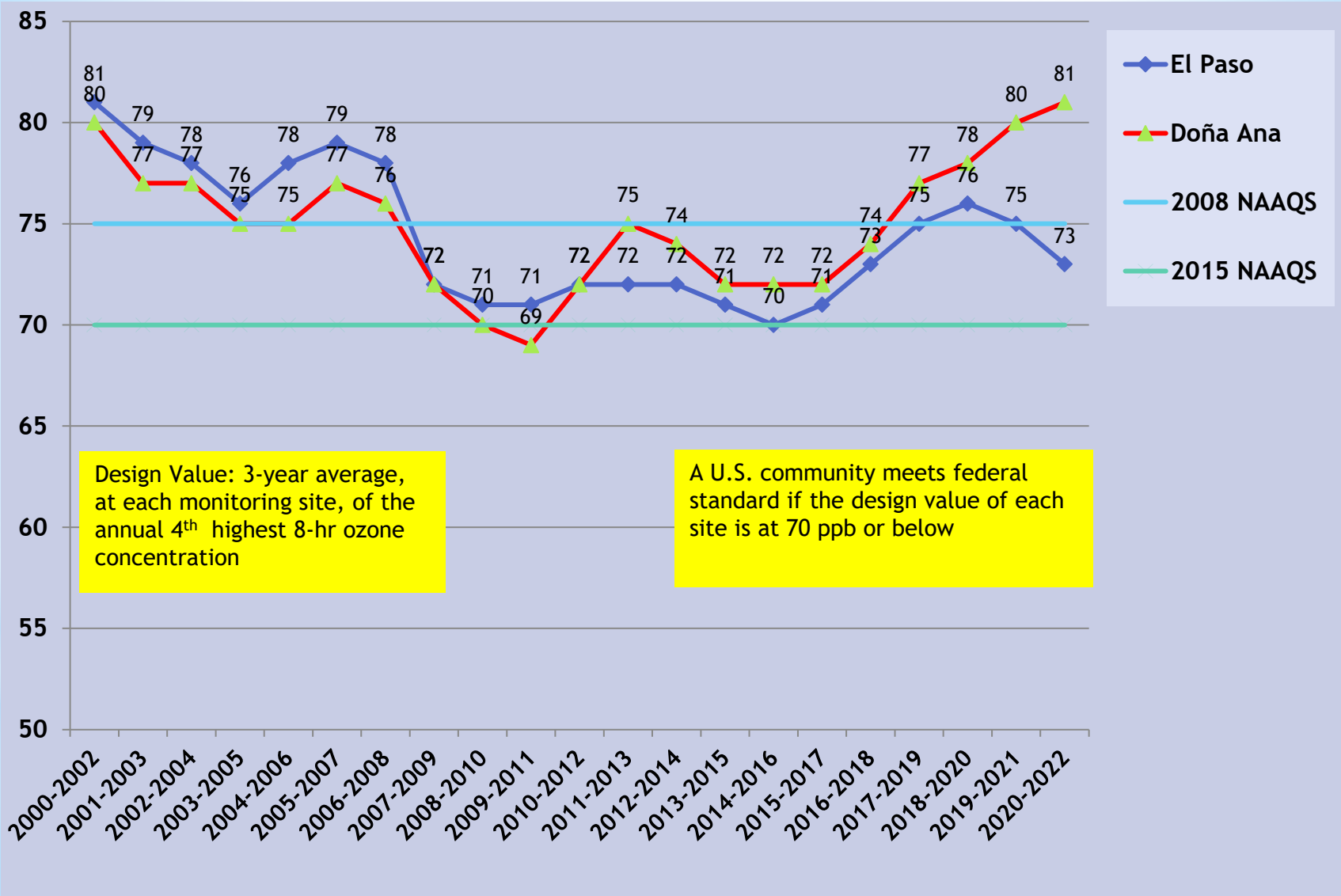
# \*Ozone 8-Hour Averages Highest Values at Monitors in the Paso del Norte (January - April 2023)

El Limite máximo permisible en México para Ozono es de **65ppb** en promedio móvil de 8 horas

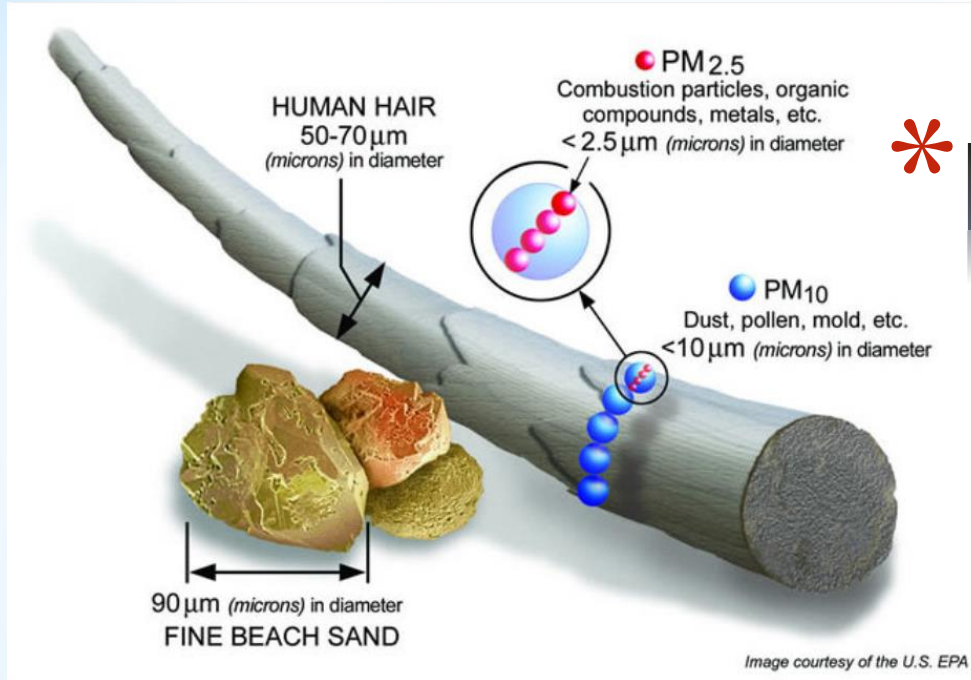
U.S. federal standard: **70 ppb** for the 3-year average of the 4<sup>th</sup> highest value



# Ozone 8-Hr. Design Values | El Paso and Doña Ana County (highest value of all sites in each area, 20002 - 2022)





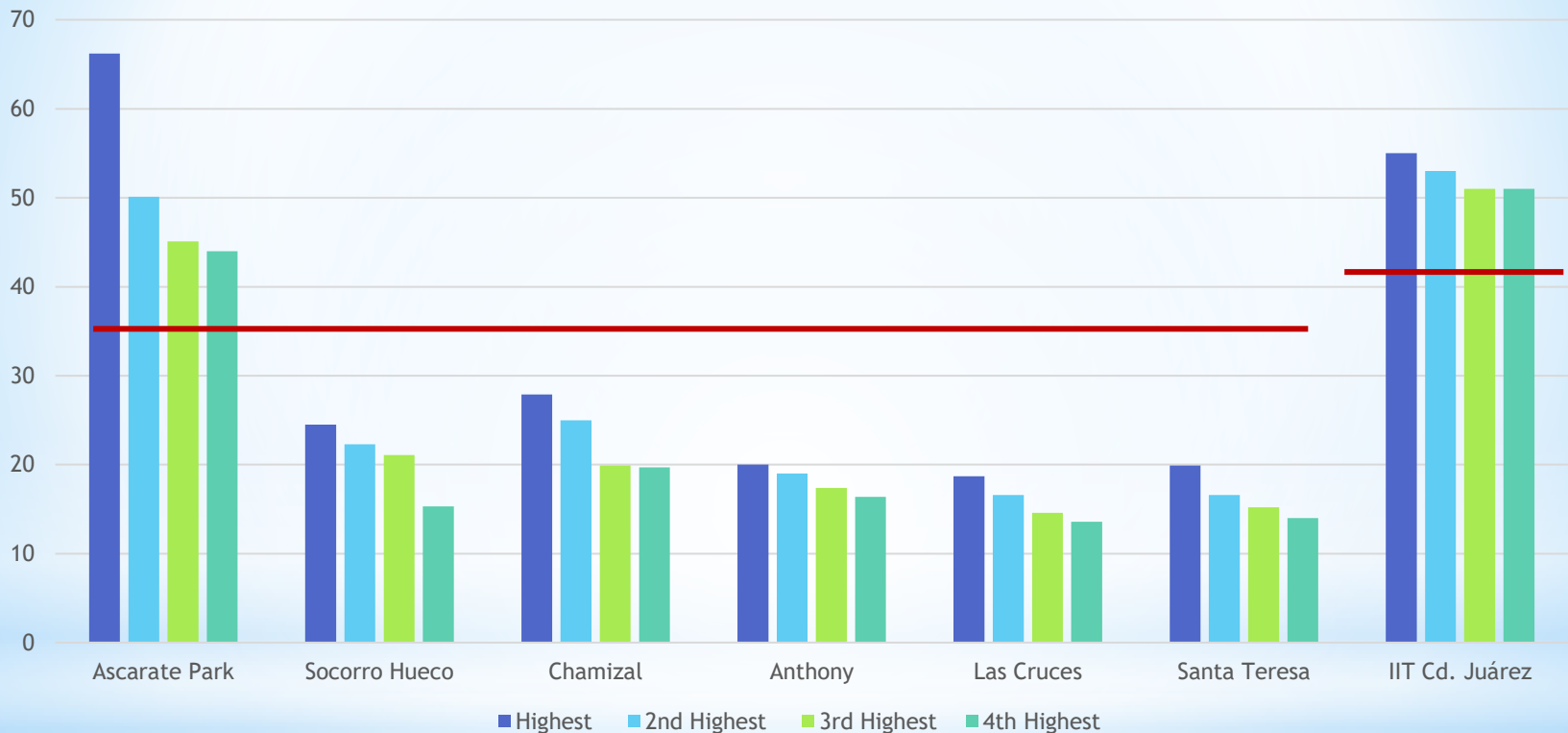


\* PM 2.5

\* PM 10

# \* Particulate Matter (pm) material particulado

**\* PM<sub>2.5</sub> 24-Hour Averages (µg/m<sup>3</sup>) Four Highest  
El Paso, Doña Ana County, and Ciudad Juárez  
January - April 2023**



**U. S. federal standards:**  
The standard for 24-hr averages, 35 ug/m3, is violated if it is exceeded by the average over any three-year period, of the annual 98th percentile

**The highest allowable limit in Mexico for PM2.5 is 41 ug/m3 in 24-hour averages.**

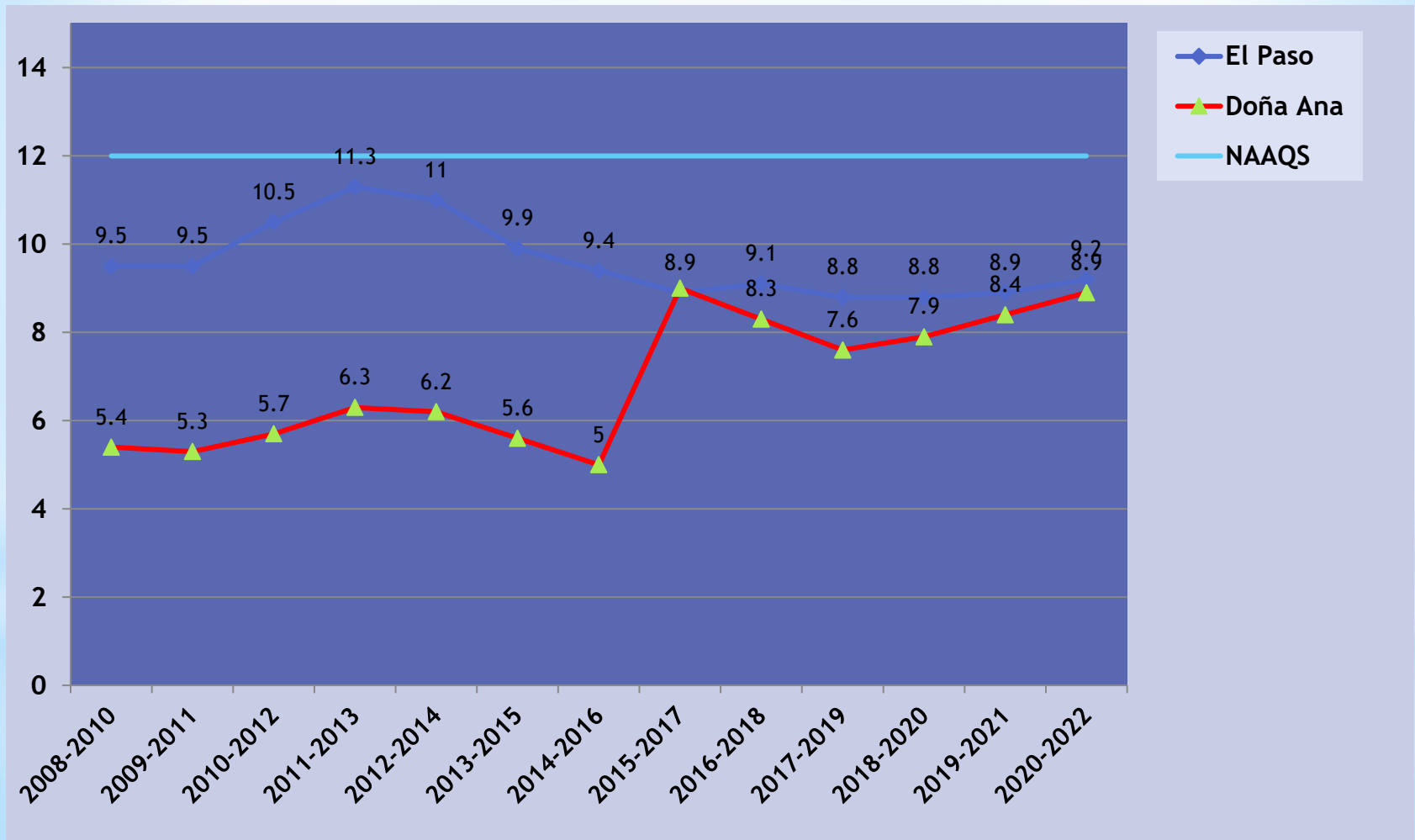
**\* Special Purpose Monitors-Non-validated Data**

Note: El Paso County (Ascarate Park and Socorro Hueco) data are Federal Reference Methods (FRM) monitors while DAC are Federal Equivalent Method (FEM).

# PM<sub>2.5</sub> Compliance with U.S. Federal Standard El Paso and Doña Ana Counties

Annual Design Value

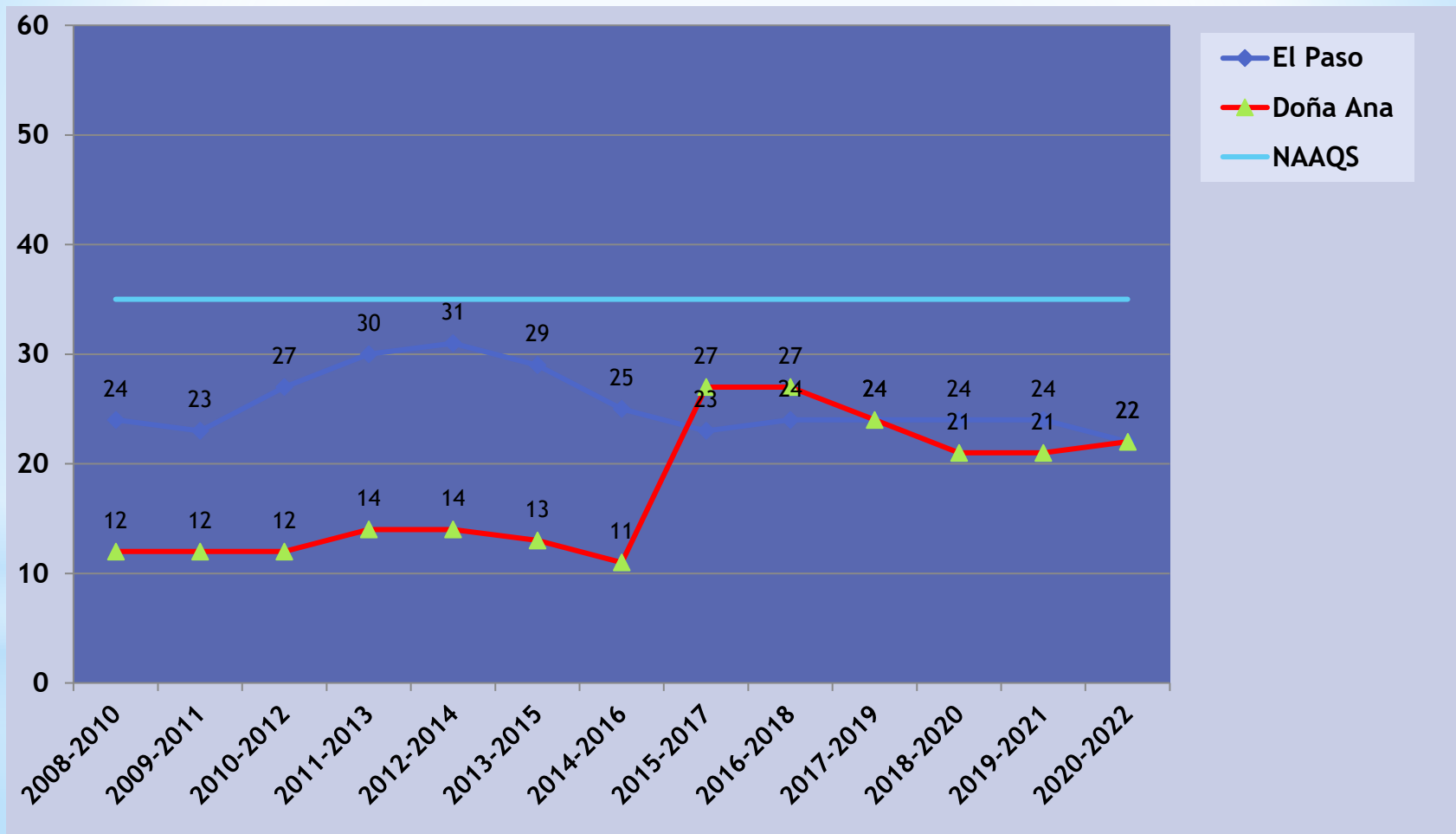
U.S. Standard: **12  $\mu\text{g}/\text{m}^3$**



# PM2.5 Compliance with U.S. Federal Standard El Paso and Doña Ana Counties

24-Hour Design Value

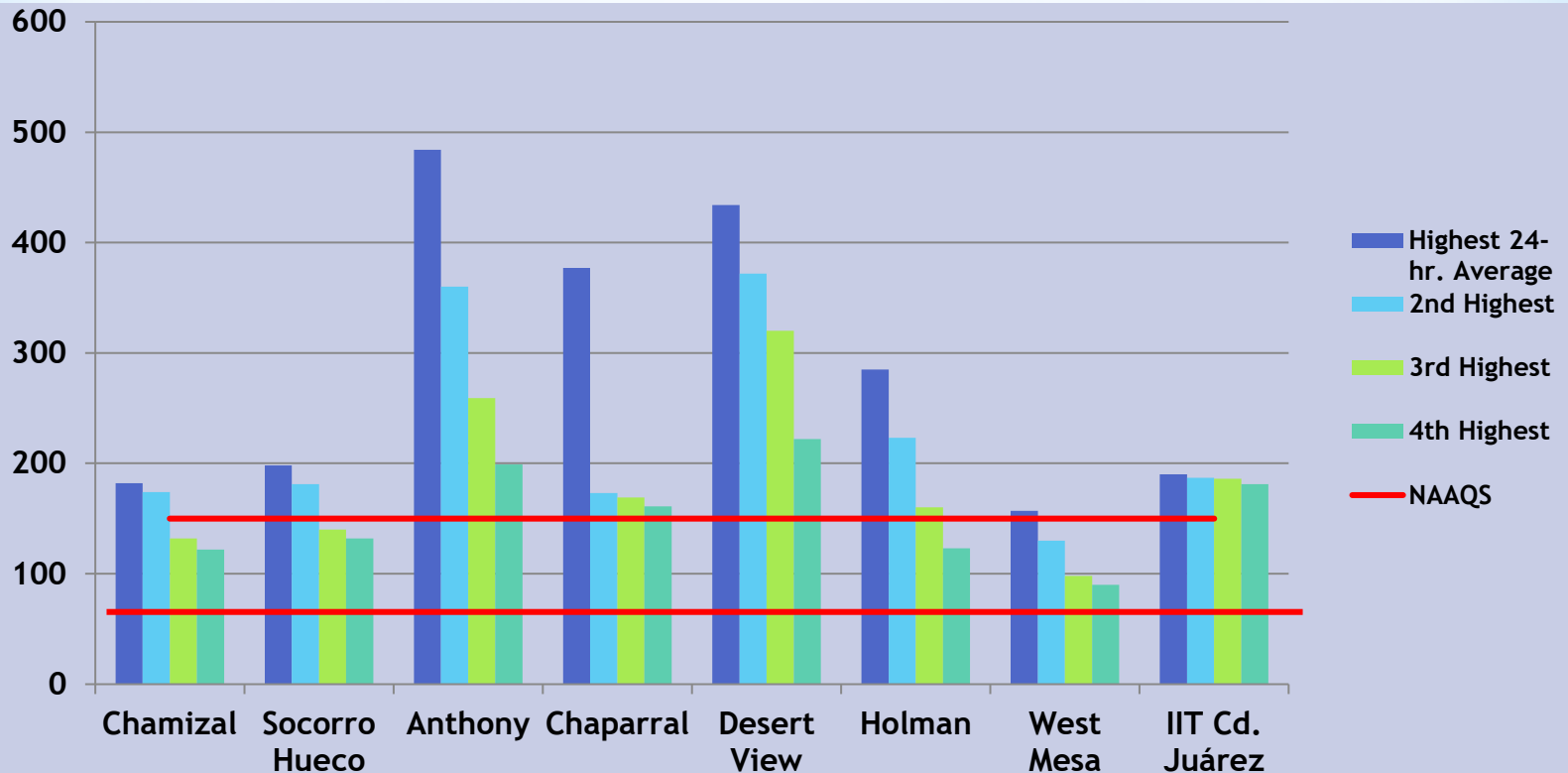
U.S. Standard **35  $\mu\text{g}/\text{m}^3$**



# PM10 24-Hour Averages ( $\mu\text{g}/\text{m}^3$ ) Four Highest El Paso, Doña Ana County, and Ciudad Juárez January - April 2023

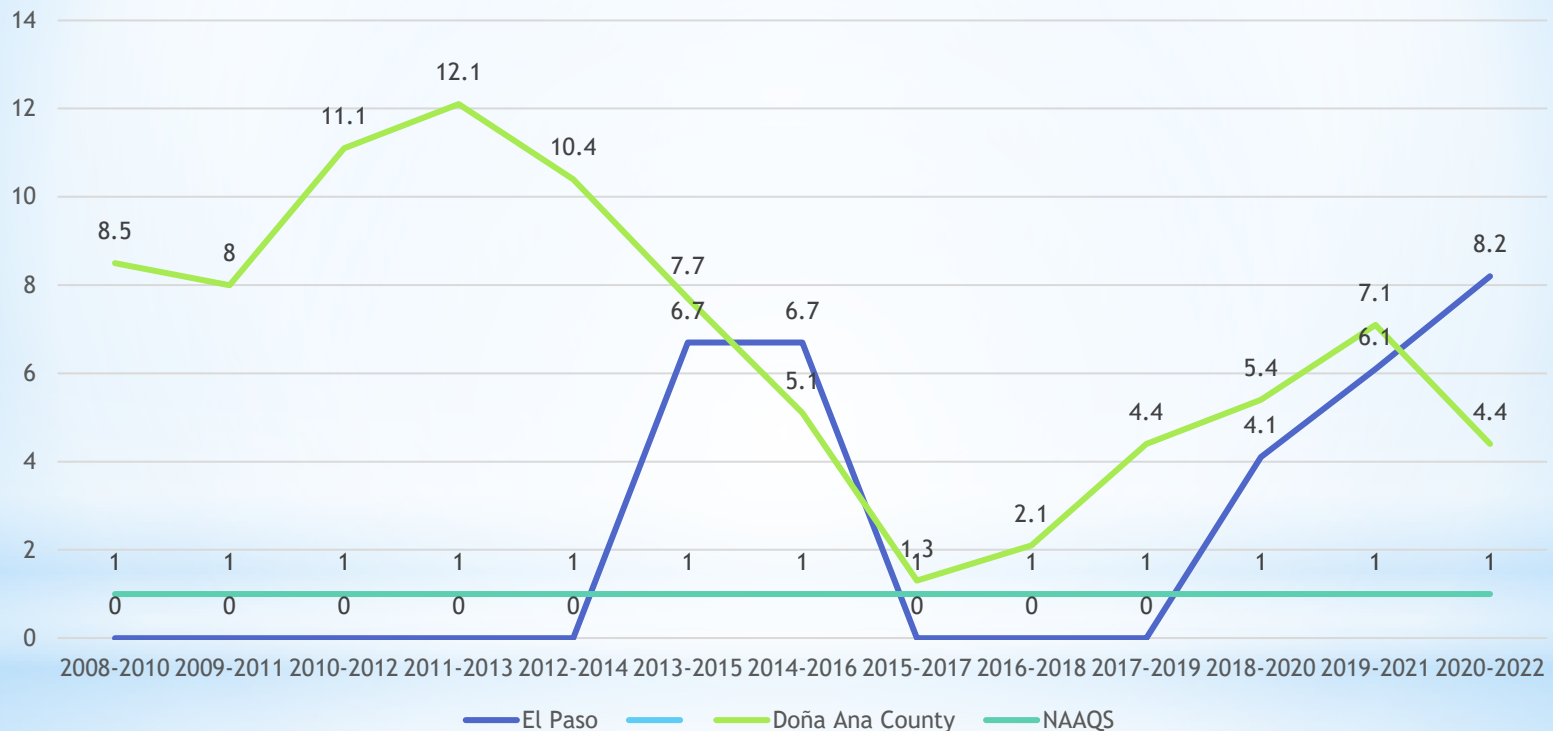
El Limite máximo permisible en México para PM10 es de  $70 \mu\text{g}/\text{m}^3$  en promedio de 24 horas

U.S. federal standard:  
 $150 \mu\text{g}/\text{m}^3$  not to be exceeded more than once per year on average over three years at any one monitor.



# \*PM10 24-Hour Design Values El Paso and Doña Ana County | 2008 - 2022

## Estimated Number of Exceedances



\*EPA exceptional events concurrences not reflected for Doña Ana County. - EPA Currently has an EE packet on hand from NMED

# Exceptional Events | Doña Ana County

## High-Wind Blowing Dust PM<sub>10</sub> Exceedances of NAAQS

Year	Events	Observed Exceedances	Concentrations (µg/m <sup>3</sup> )	EPA Review Process
2022	15	30	157 - 879	Internal QA/QC
2021	15	31	157 - 769	Submitted
2020	8	13	157- 504	Concurrence
2019	8	25	156-734	Concurrence
2018	7	18	158-326	Concurrence
2017	11	27	157-721	Concurrence
2016	11	28	162-689	Concurrence

# Cumplimiento con los límites de exposición crónica | Media aritmética anual 2023

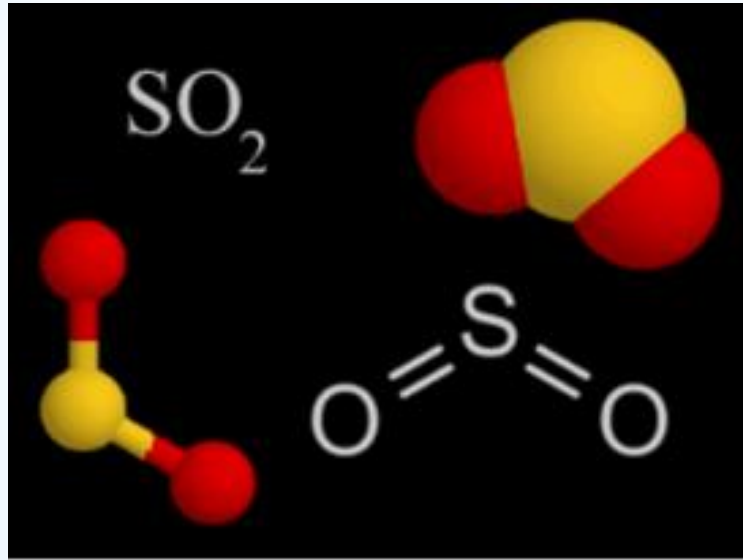
## Compliance with exposure limits | Annual arithmetic mean 2023

Parámetro Parameter	Límite de exposición crónica anual Annual exposure limit	Promedio trimestral Quarterly mean
PM <sub>2.5</sub>	10 µg m <sup>-3</sup>	34**
PM <sub>10</sub>	36 µg m <sup>-3</sup>	66**

\*\*Dentro de esta información se consideran los eventos de tolvaneras

\*\*Los datos obtenidos corresponden al primer cuatrimestre del año

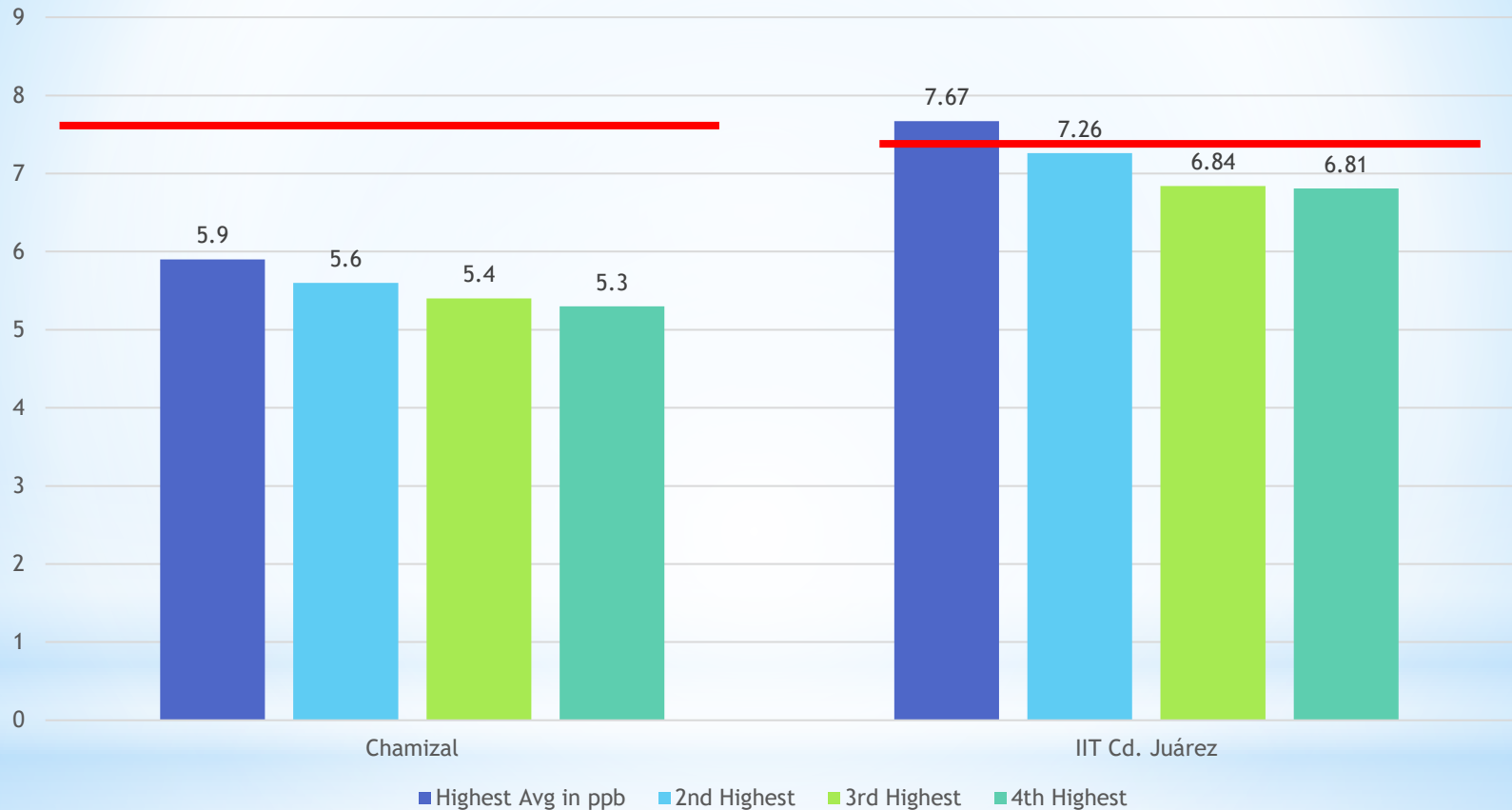




\* Dióxido de azufre  
Sulfur Dioxide SO<sub>2</sub>

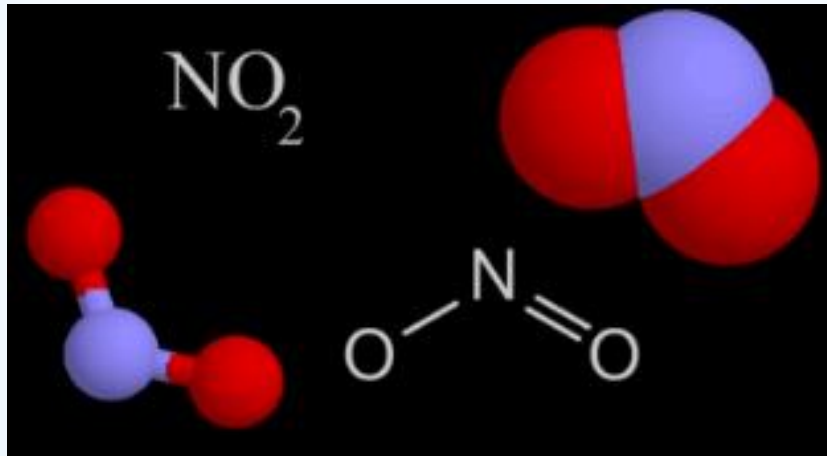
# SO<sub>2</sub> 1-Hour Averages | Four Highest

## El Paso and Ciudad Juárez | January - April 2023



U.S. federal standard:  
**76 ppb** 99th percentile of 1-hour daily maximum concentrations, averaged over 3 years

The highest allowable limit in Mexico for SO<sub>2</sub> is **75 ppb** in 1-hour average.

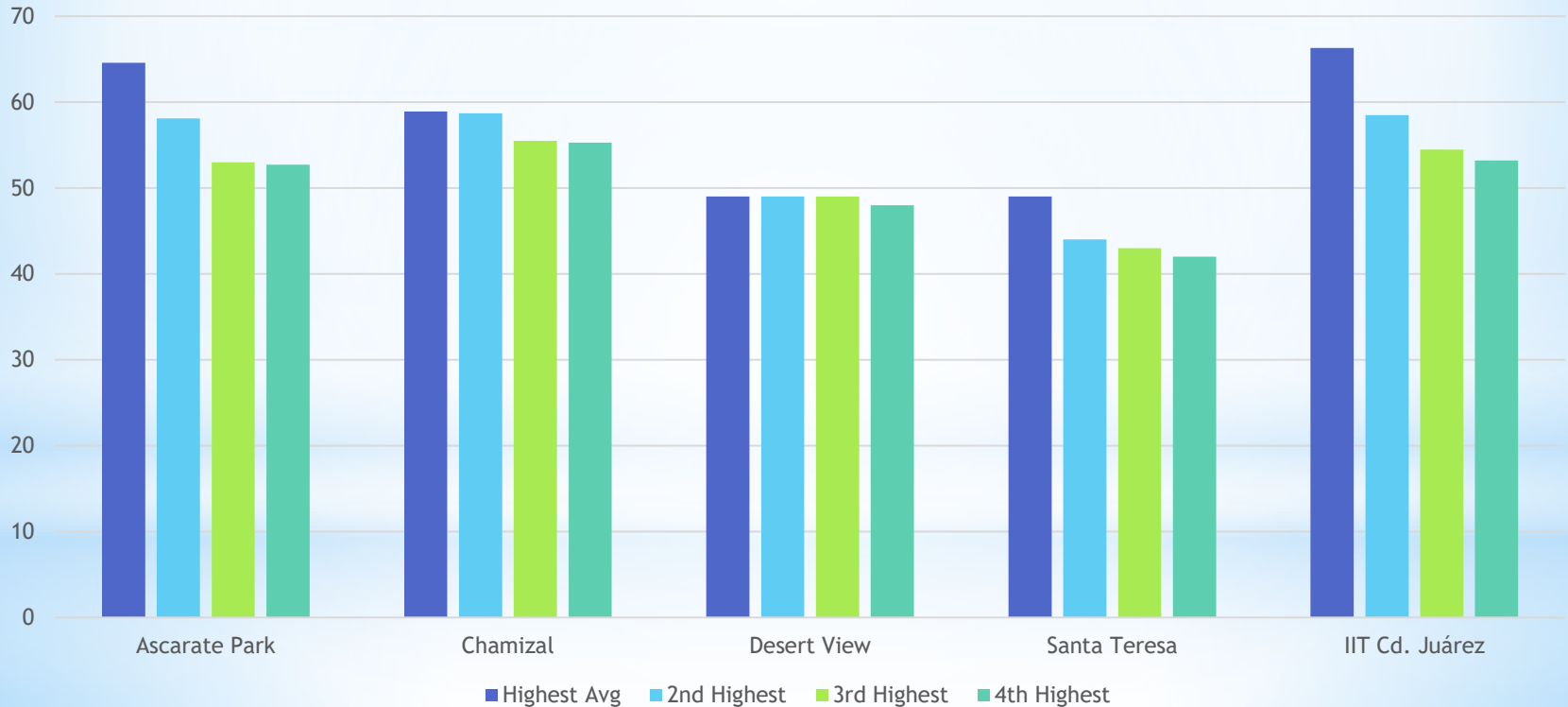


\* Dióxido de nitrógeno  
Nitrogen Dioxide NO<sub>2</sub>

\* **NO<sub>2</sub> 1-Hour Averages (ppb) Four Highest**  
**El Paso del Norte**  
**January - April 2023**

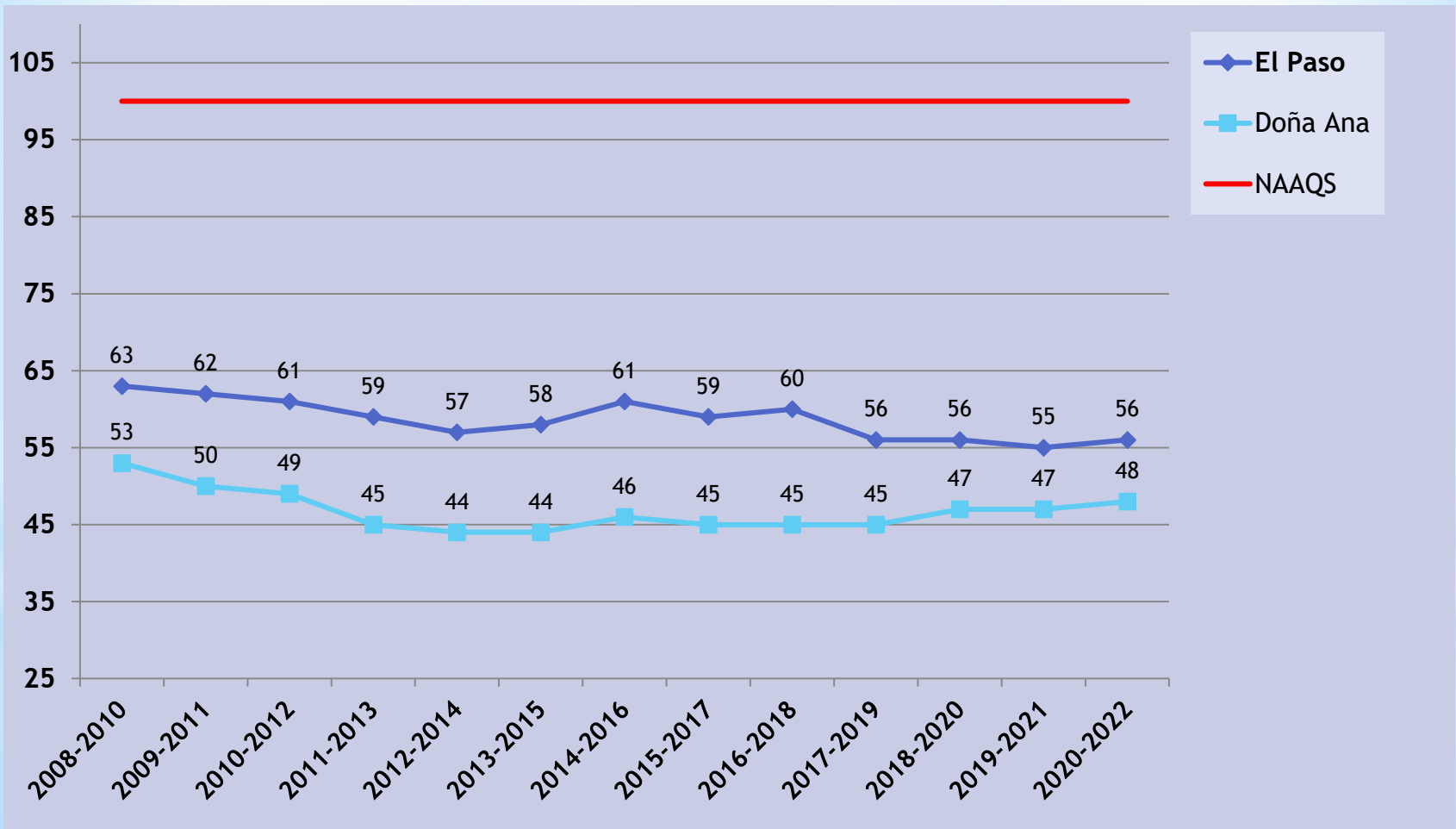
U.S. federal standard:  
**100 ppb** 98th percentile of 1-hour daily maximum concentrations, averaged over 3 years

The highest allowable limit in Mexico for NO<sub>2</sub> is **106 ppb** in hourly averages.



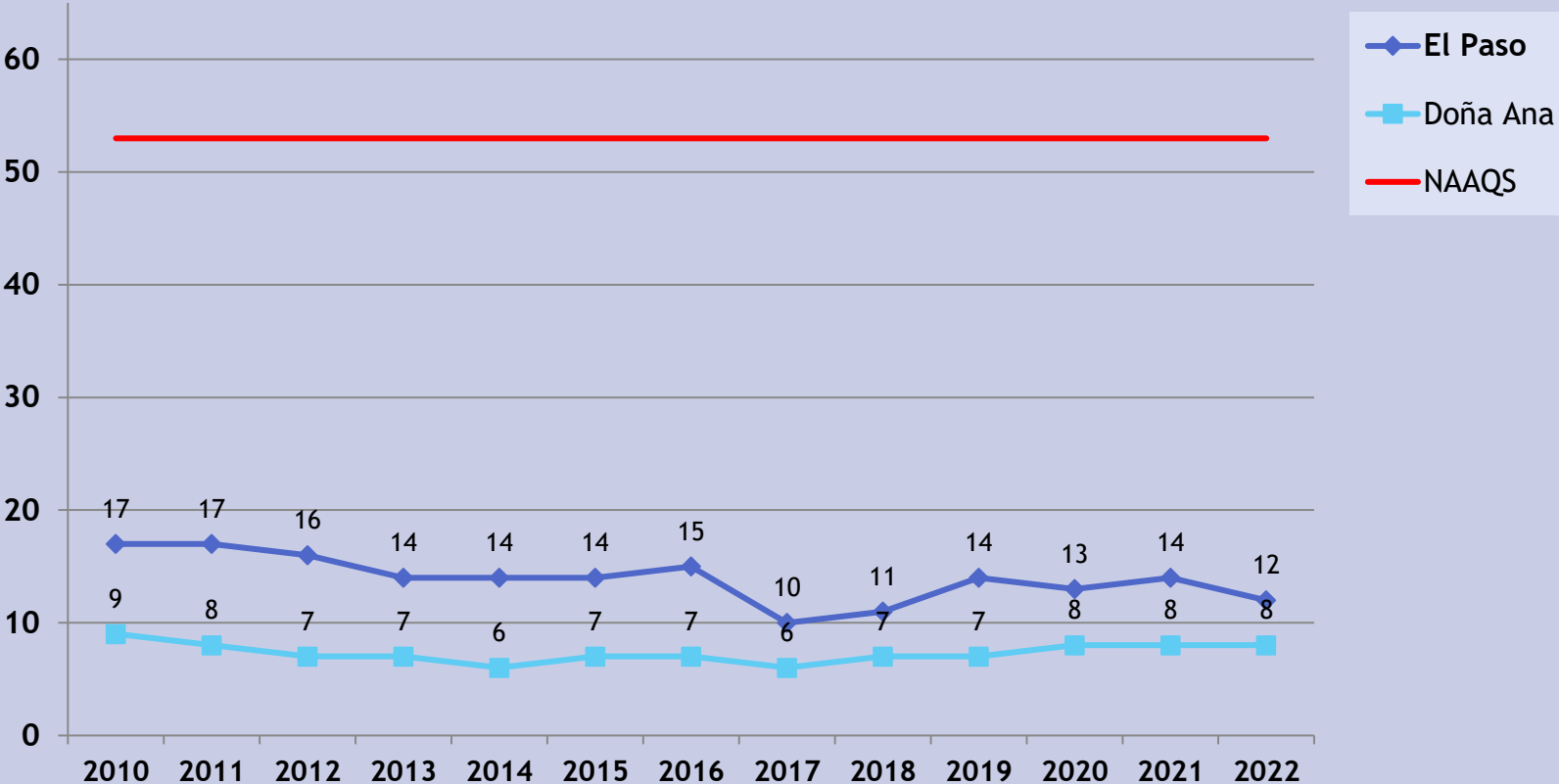
# NO<sub>2</sub> Design Values 1-Hour Averages (ppb) El Paso & Doña Ana Counties

The 1-hour NO<sub>2</sub> NAAQS (100 ppb) is the 3-year average of the annual 98th percentile of the daily maximum 1-hour average concentrations.



# NO<sub>2</sub> Design Values Annual Mean (ppb) El Paso & Doña Ana Counties

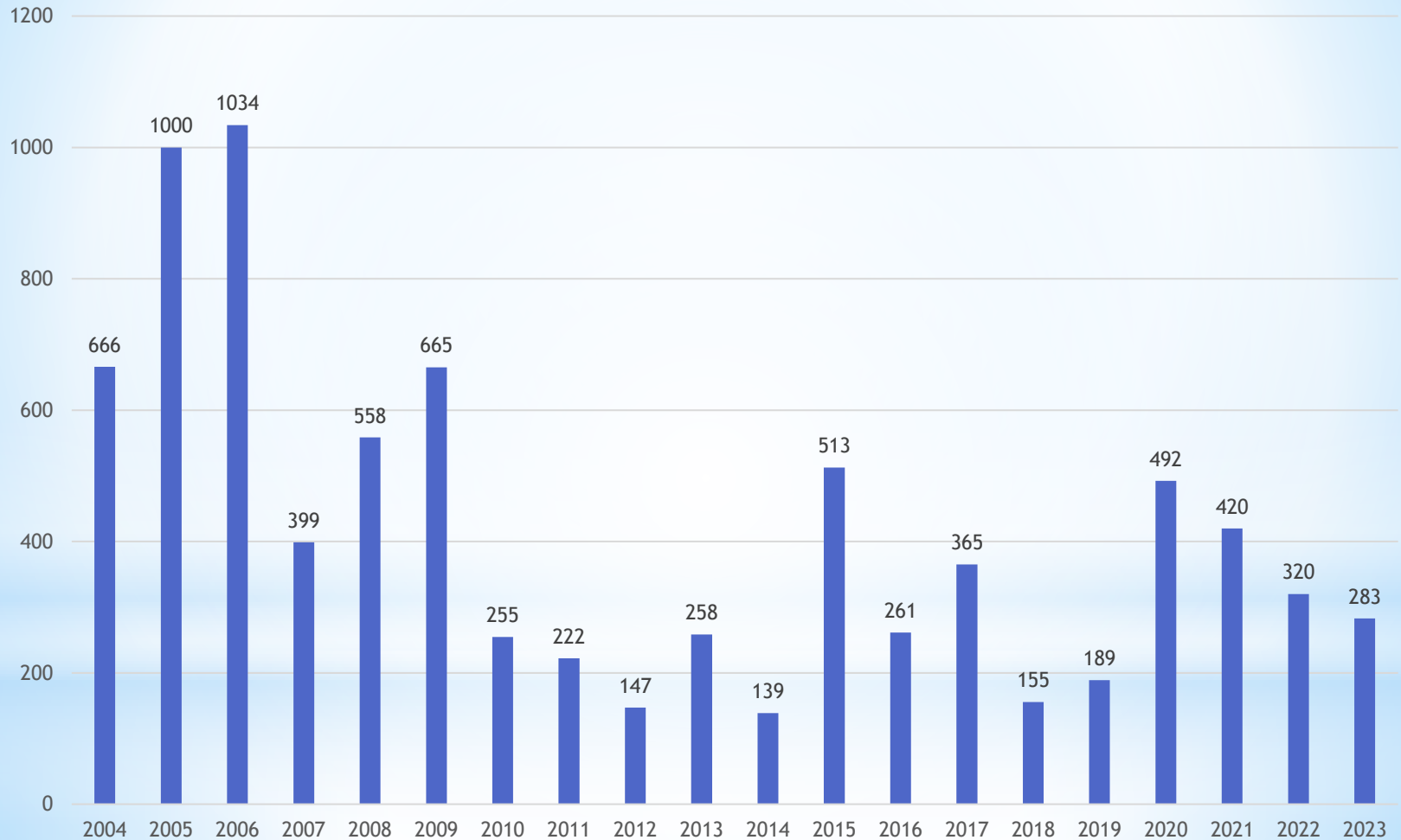
The annual NO<sub>2</sub> NAAQS (53 ppb) is the annual average concentration, averaged over three years.





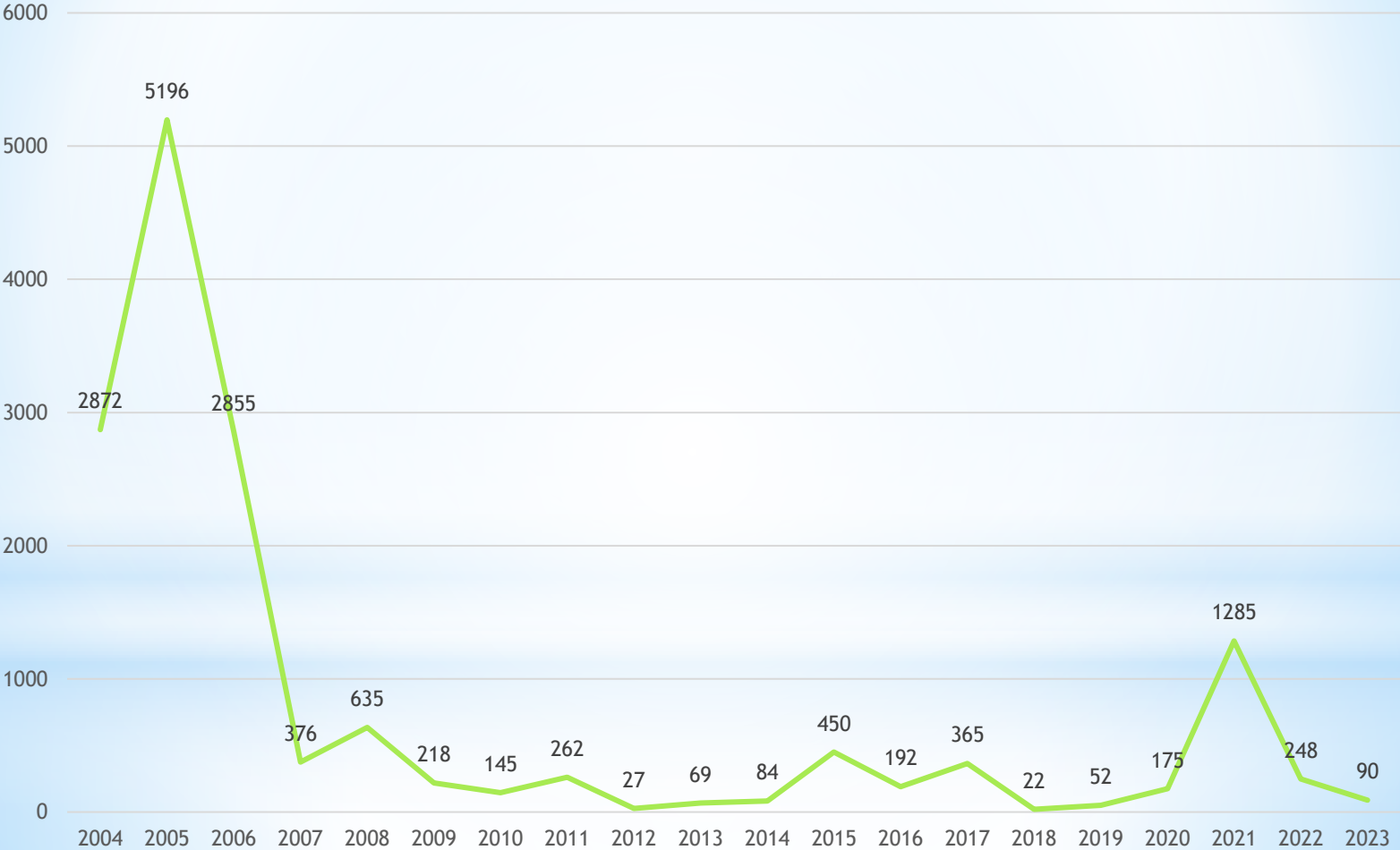
\* Hydrogen Sulfide (H<sub>2</sub>S)  
Sulfuro de hidrógeno

# Hydrogen Sulfide | 30-Minute Averages (ppb) Highest Value at “Lower Valley” Monitor 2004-2023





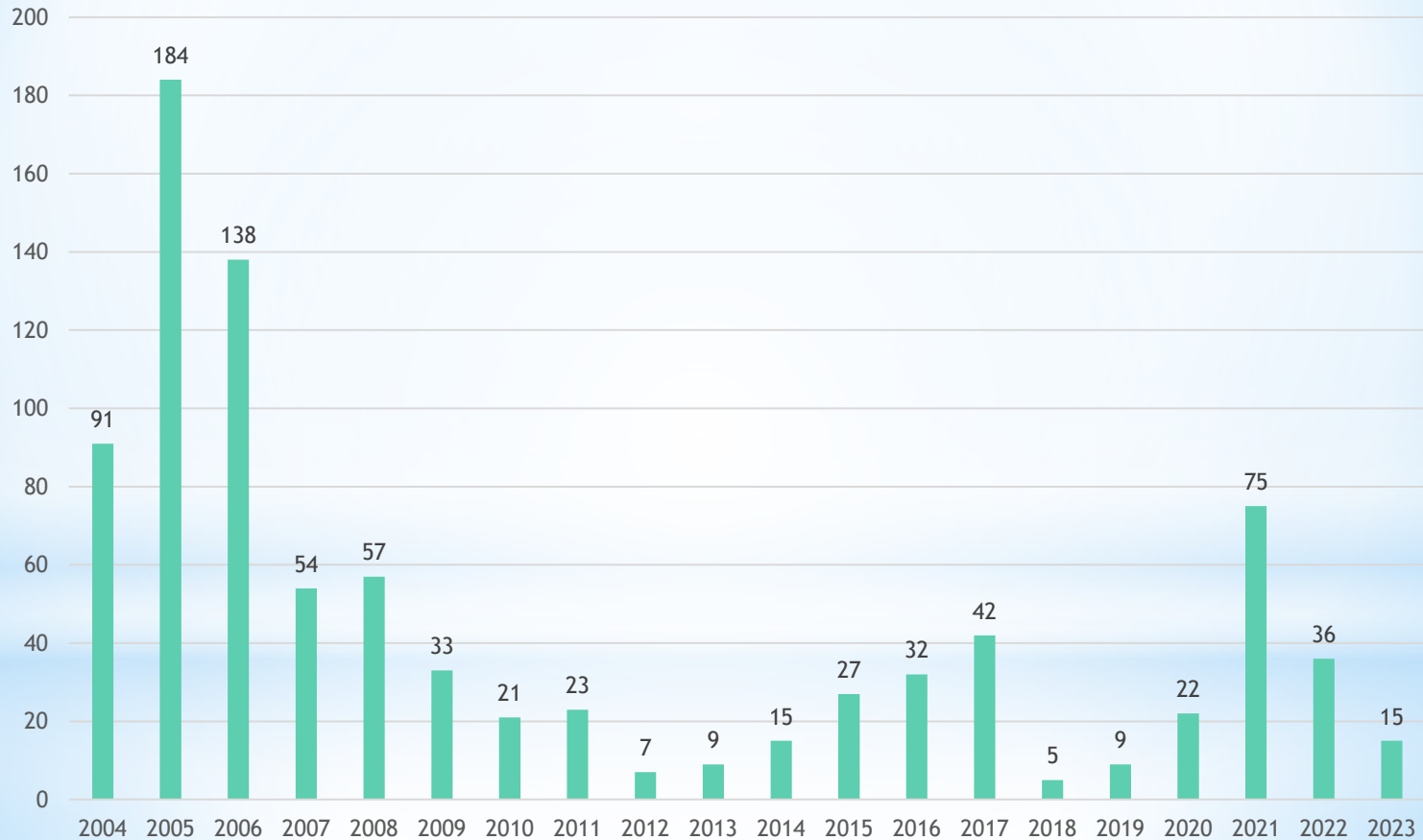
# Hydrogen Sulfide | 30-Minute Averages (ppb) Number of Exceedances at “Lower Valley” Monitor 2004-2023



# Hydrogen Sulfide | 30-Minute Averages

## Number of Days with Exceedances at “Lower Valley” Monitor

### 2004-2023



NMED

Armando Paz

[armando.paz@state.nm.us](mailto:armando.paz@state.nm.us)

TCEQ

Border Affairs

[ba@tceq.texas.gov](mailto:ba@tceq.texas.gov)

Nos pueden contactar

en:

You can find us at:

■ [fvazquez@uacj.mx](mailto:fvazquez@uacj.mx)

■ [frida.toquinto@uacj.mx](mailto:frida.toquinto@uacj.mx)



\* Questions?  
¿Preguntas?



\*Thank you!  
Gracias!

