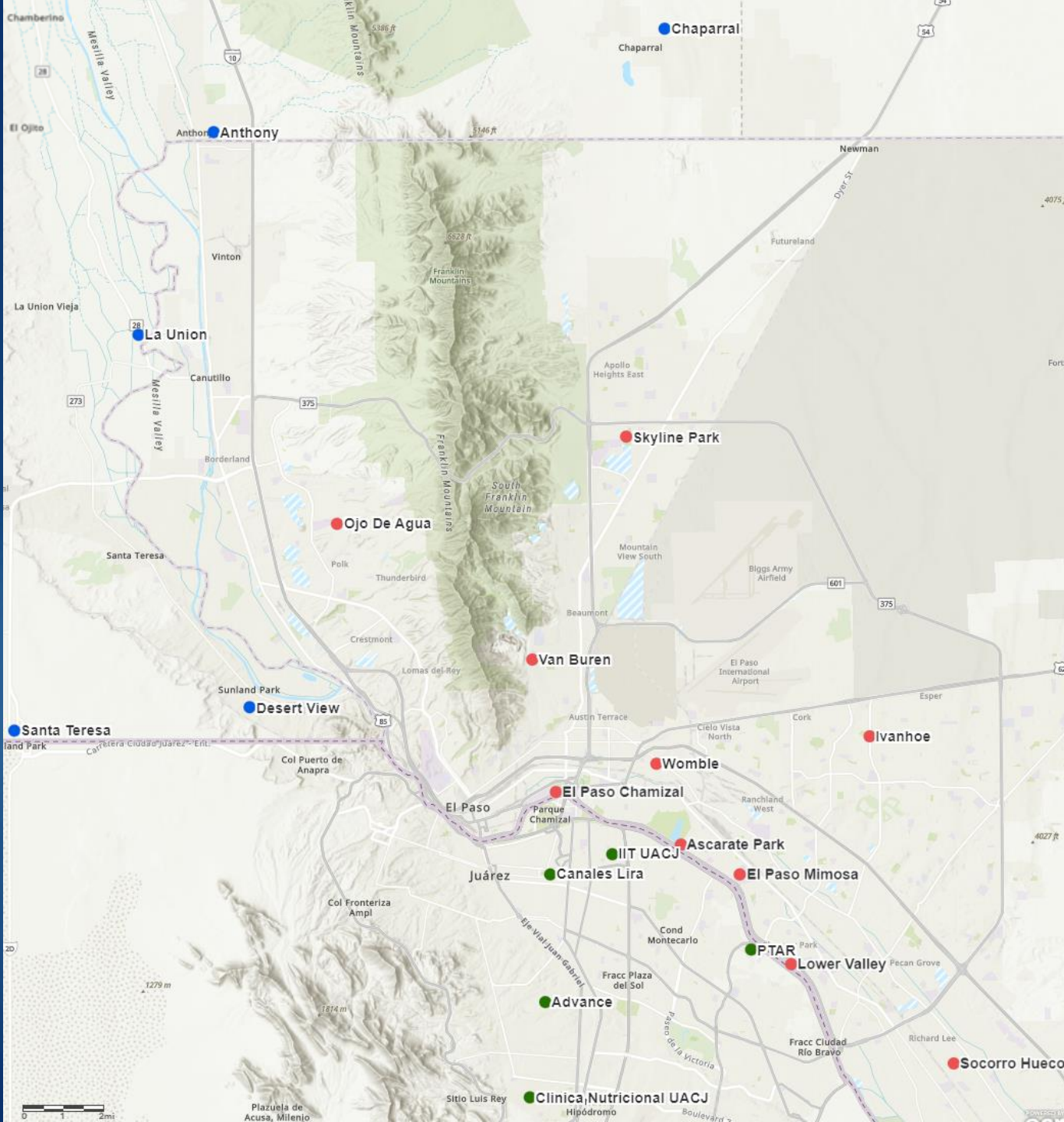


Paso del Norte Air Quality Report | December 11, 2025 US EPA Region 6

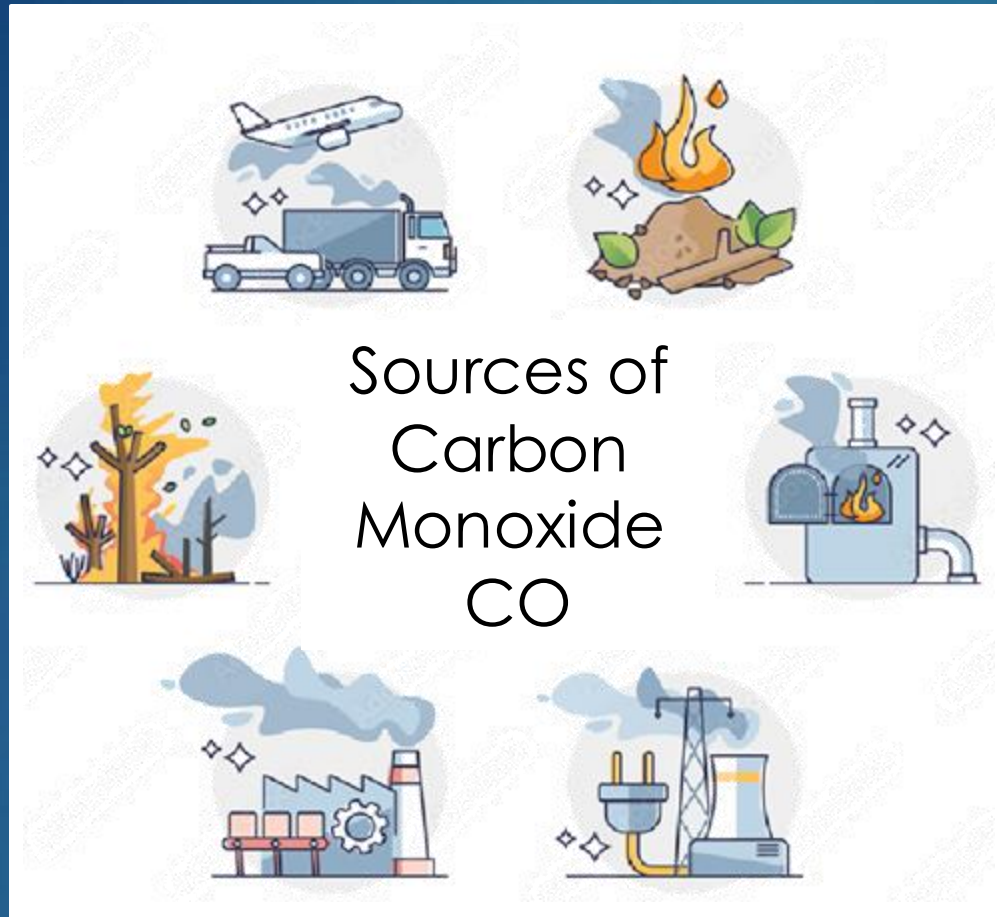


Overview

- Current air monitoring networks
- January 1 – November 1, 2025 data by pollutant with design values for each country
- Open discussion

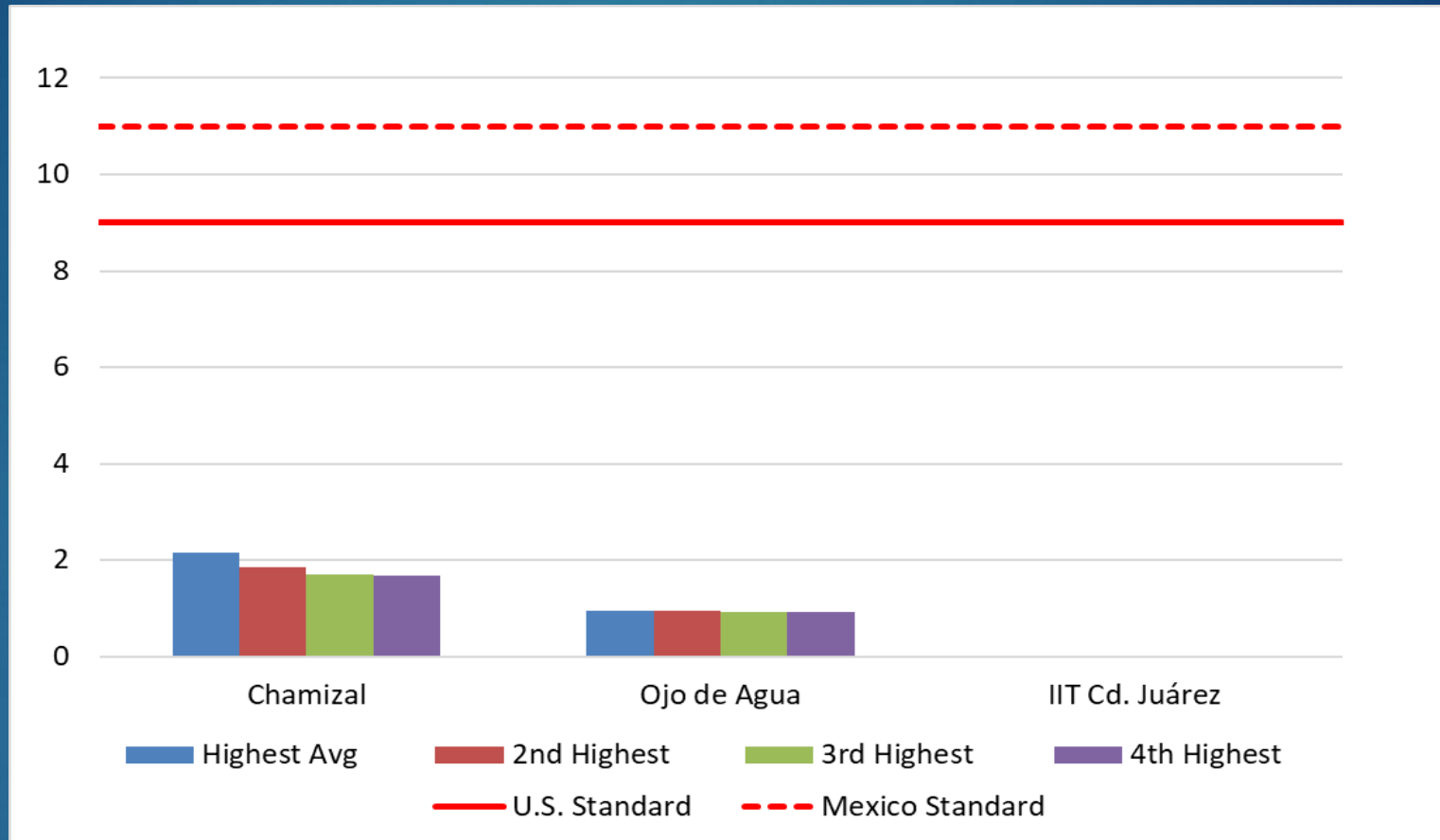


Paso del Norte Air Monitoring Stations



Carbon
monoxide
(CO)
Monóxido
de carbono

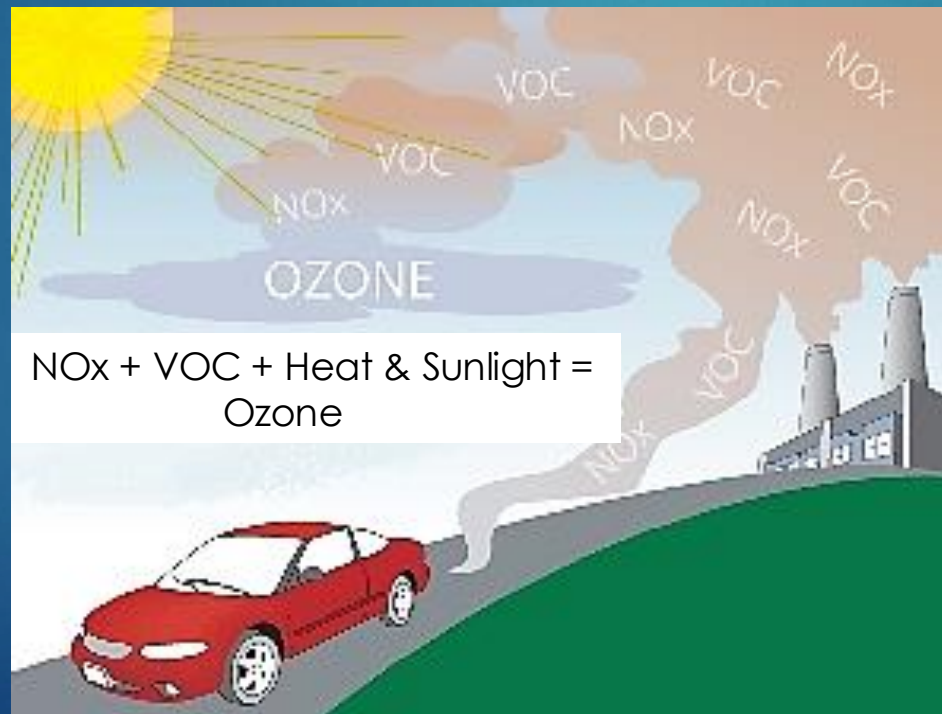
CO 8 Hr. Averages Four Highest Values in (ppm) El Paso and Ciudad Juárez (January 1 - November 1, 2025)



The **U.S. federal standard, 9.0 ppm**, is violated when more than one reading at the same monitor in one calendar year is at or above that value.

The **Mexico federal standard** is a highest allowable limit of 11 ppm.

Note: CO data invalid at IIT Cd. Juárez during this period

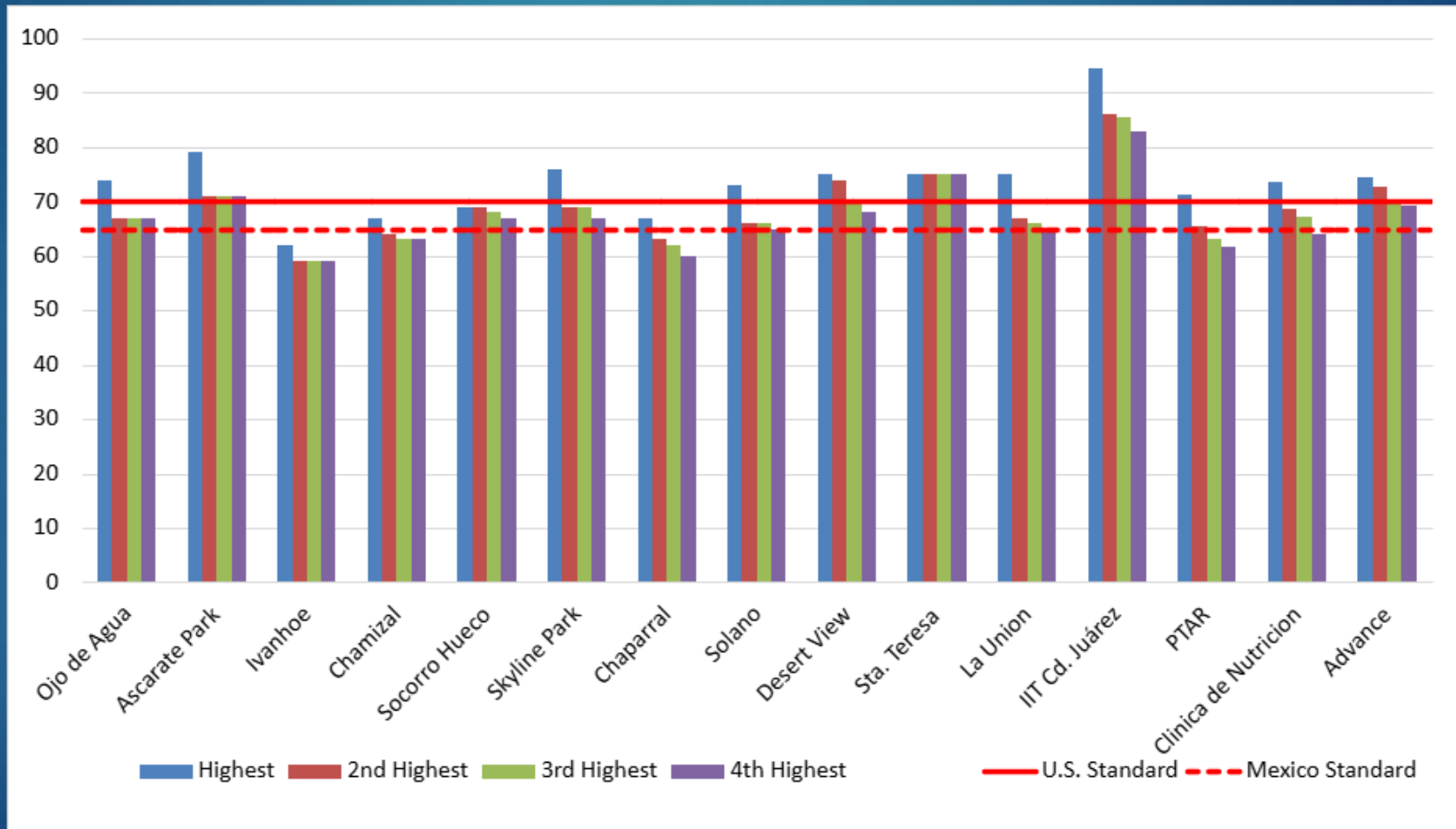


Ozone
(O_3)
Ozono

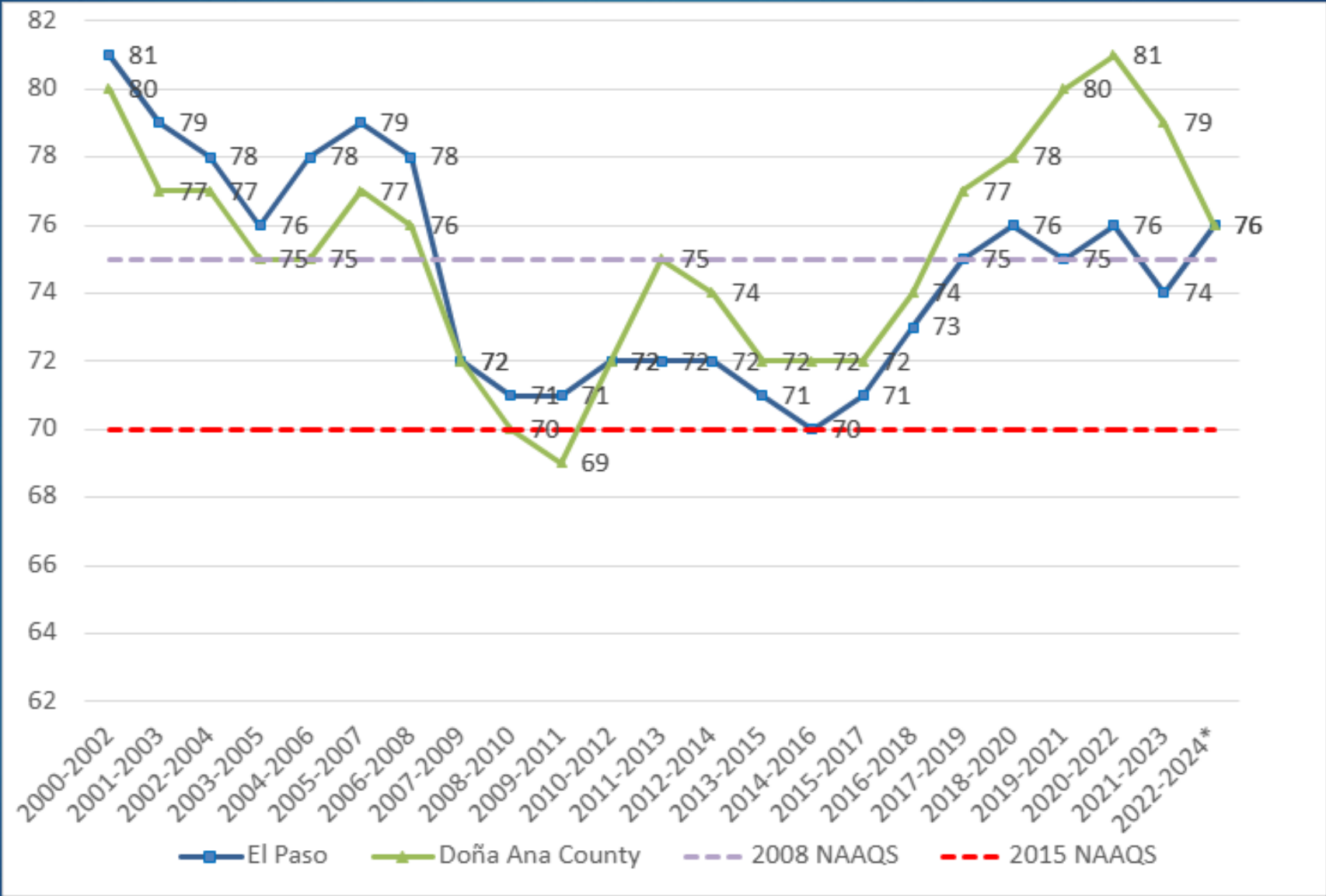
Ozone 8-Hour Averages Highest Values at Monitors in the Paso del Norte (January 1 - November 1, 2025)

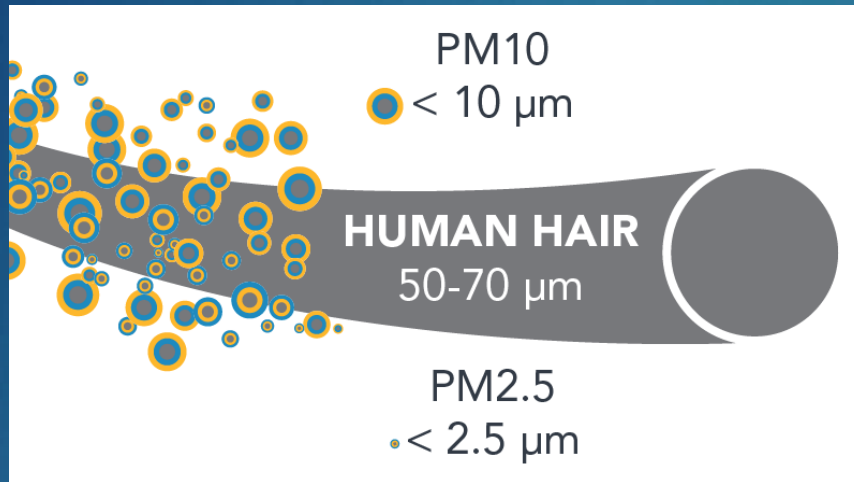
U.S. federal standard:
70 ppb for the 3-year average of the 4th
highest value

The maximum permissible limit in Mexico:
65ppb on an 8-hour moving average



Ozone 8-Hr. Design Values | El Paso and Doña Ana County (highest value of all sites in each area, 2002 – 2024*)





Particulate Matter (PM) Material Particulado

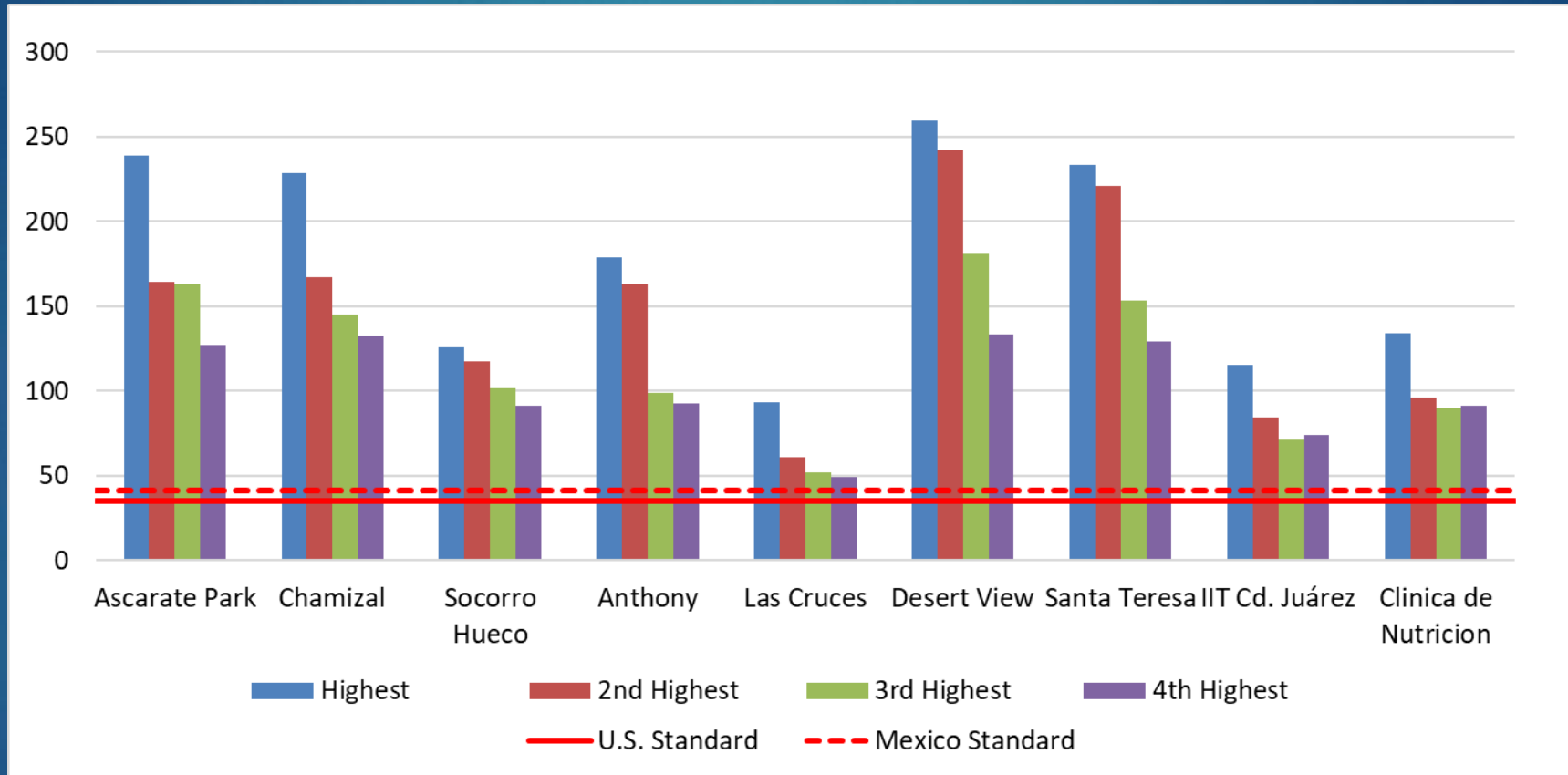


PM_{2.5} 24-Hour Averages (μg/m³) Four Highest El Paso, Doña Ana County, and Ciudad Juárez January 1 - November 1, 2025

U. S. federal standards:

The standard for 24-hr averages, 35 ug/m³, is violated if it is exceeded by the average over any three-year period, of the annual 98th percentile

The highest allowable limit in Mexico for PM_{2.5} is 41 ug/m³, in 24-hour averages.



* Special Purpose Monitors-Non-validated Data

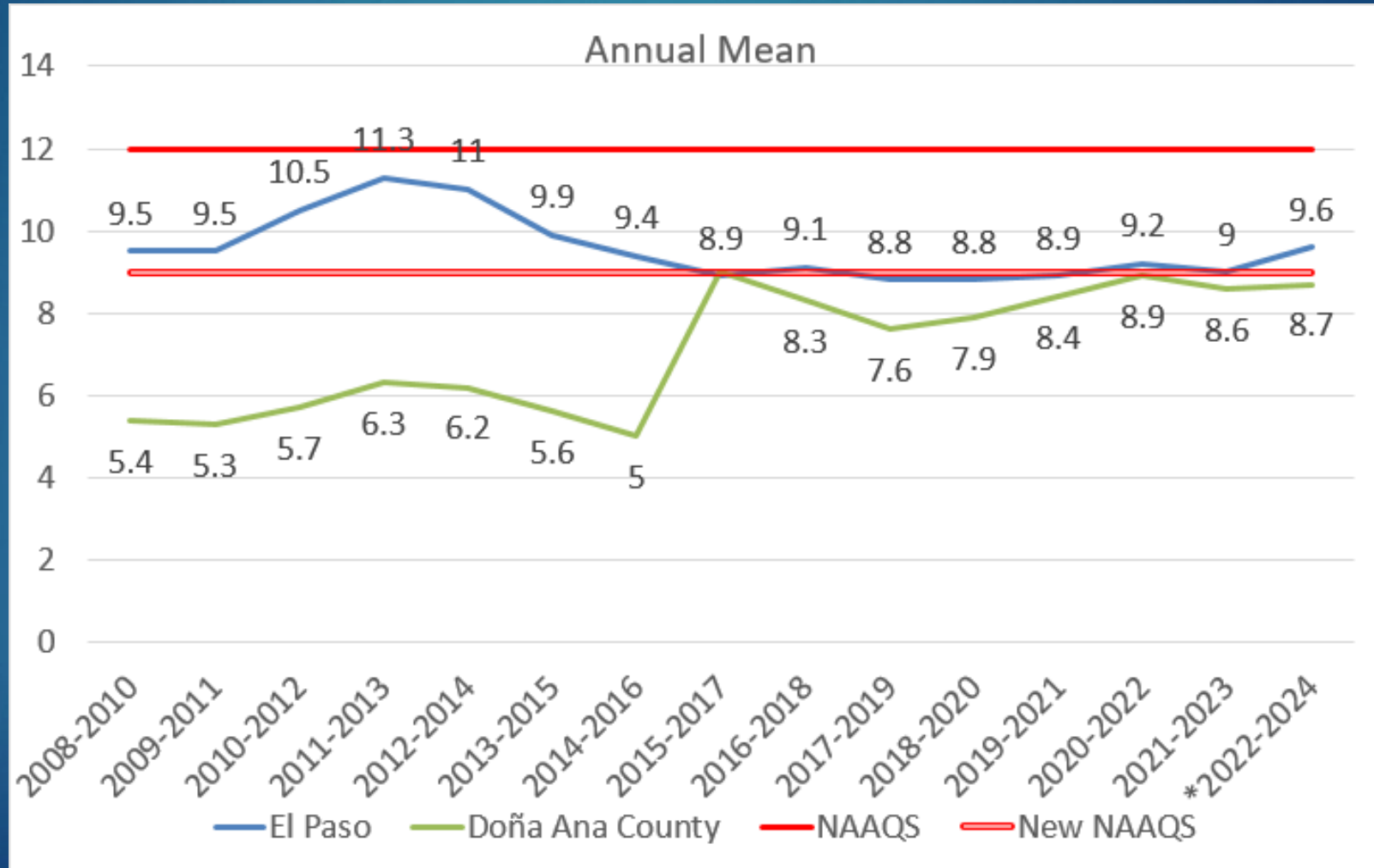
Note: El Paso County (Ascarate Park and Socorro Hueco) data are Federal Reference Methods (FRM) monitors while DAC are Federal Equivalent Method (FEM).

PM_{2.5} Compliance with U.S. Federal Standard El Paso and Doña Ana Counties

Annual Design Value

U.S. Standard: 12 $\mu\text{g}/\text{m}^3$

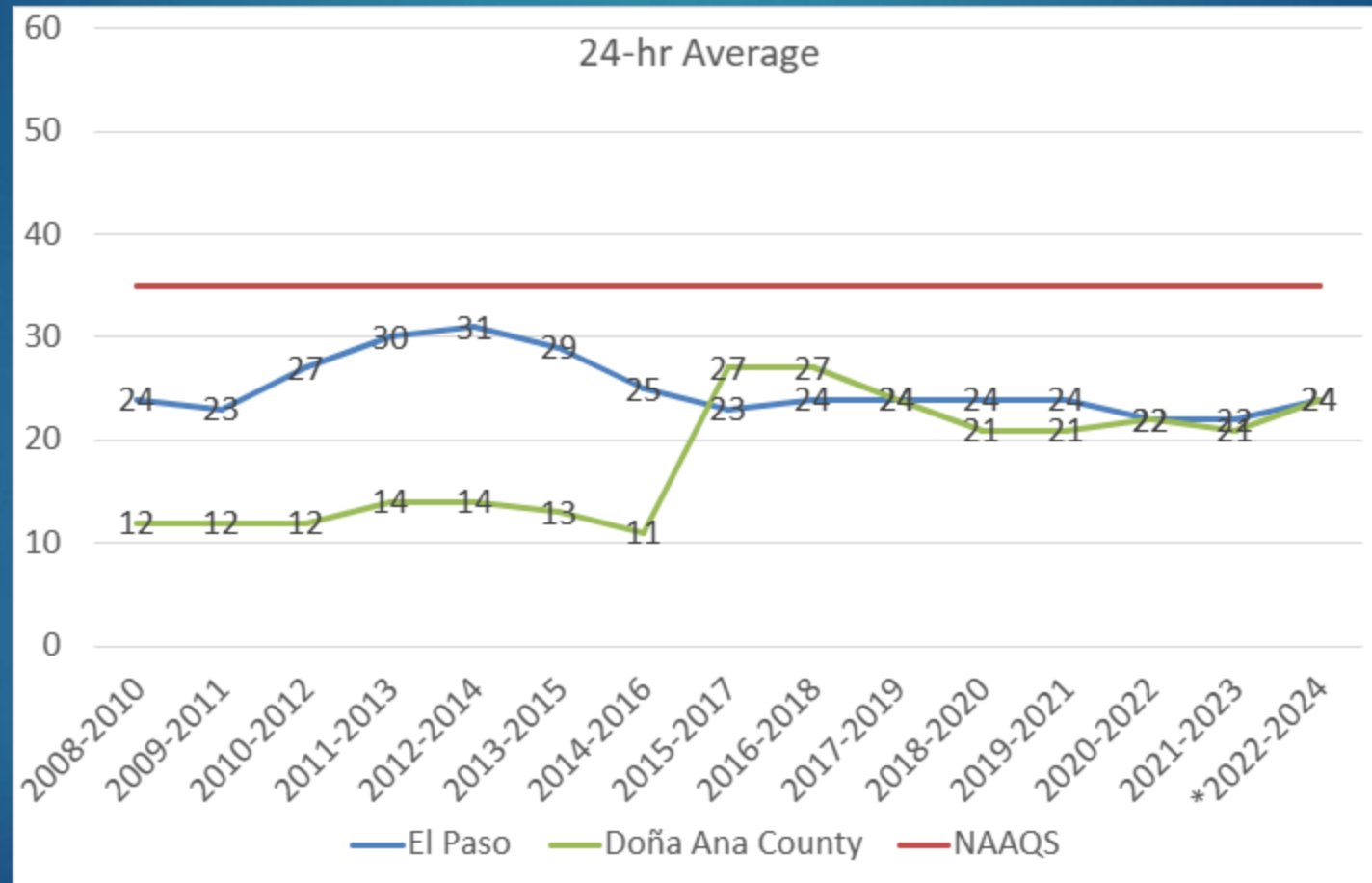
New U.S. Standard: 9 $\mu\text{g}/\text{m}^3$



PM_{2.5} Compliance with U.S. Federal Standard El Paso and Doña Ana Counties

24-Hour Design Value

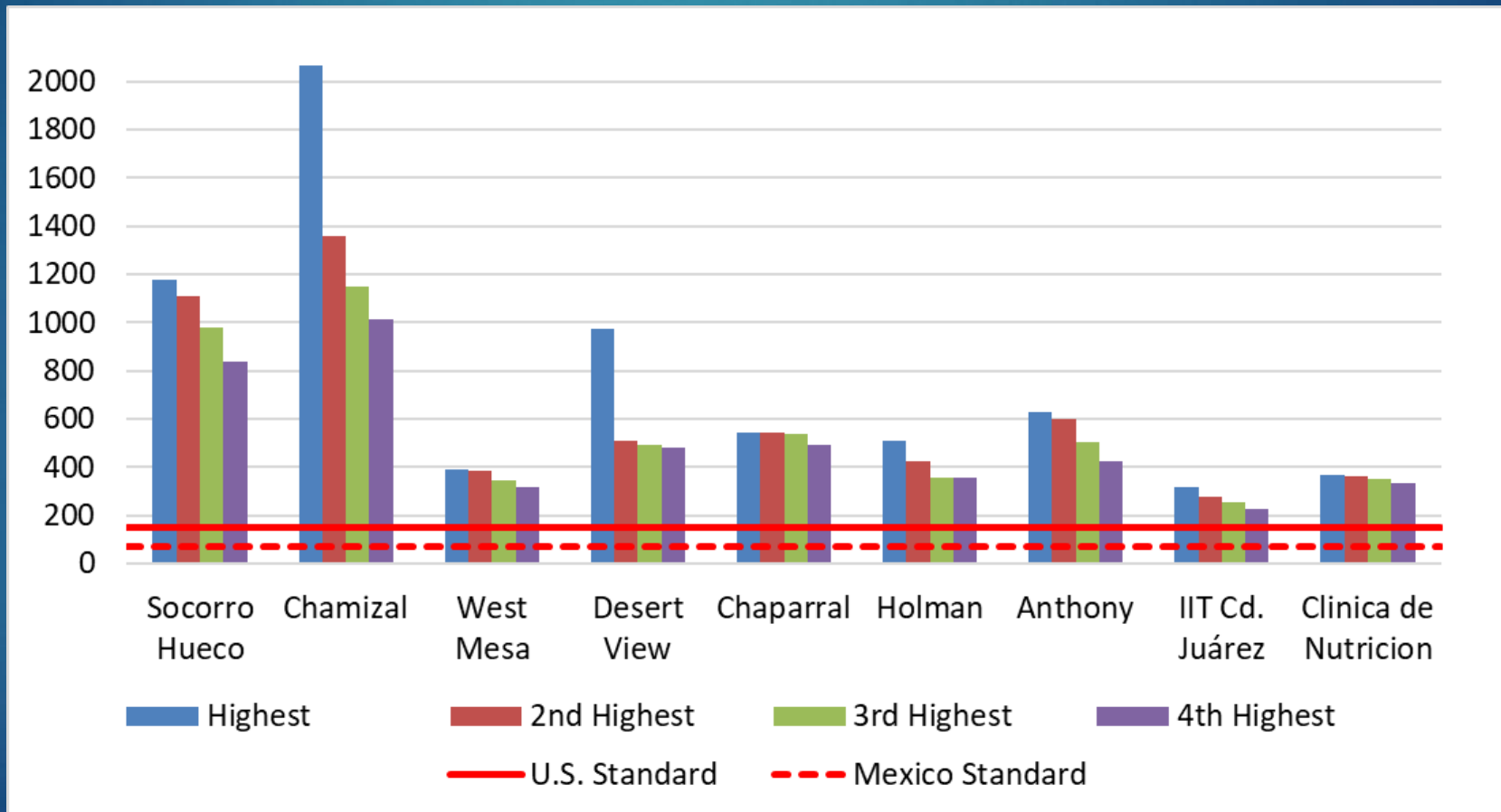
U.S. Standard 35 µg/m³



PM₁₀ 24-Hour Averages (µg/m³) Four Highest El Paso, Doña Ana County, and Ciudad Juárez January 1 - November 1, 2025

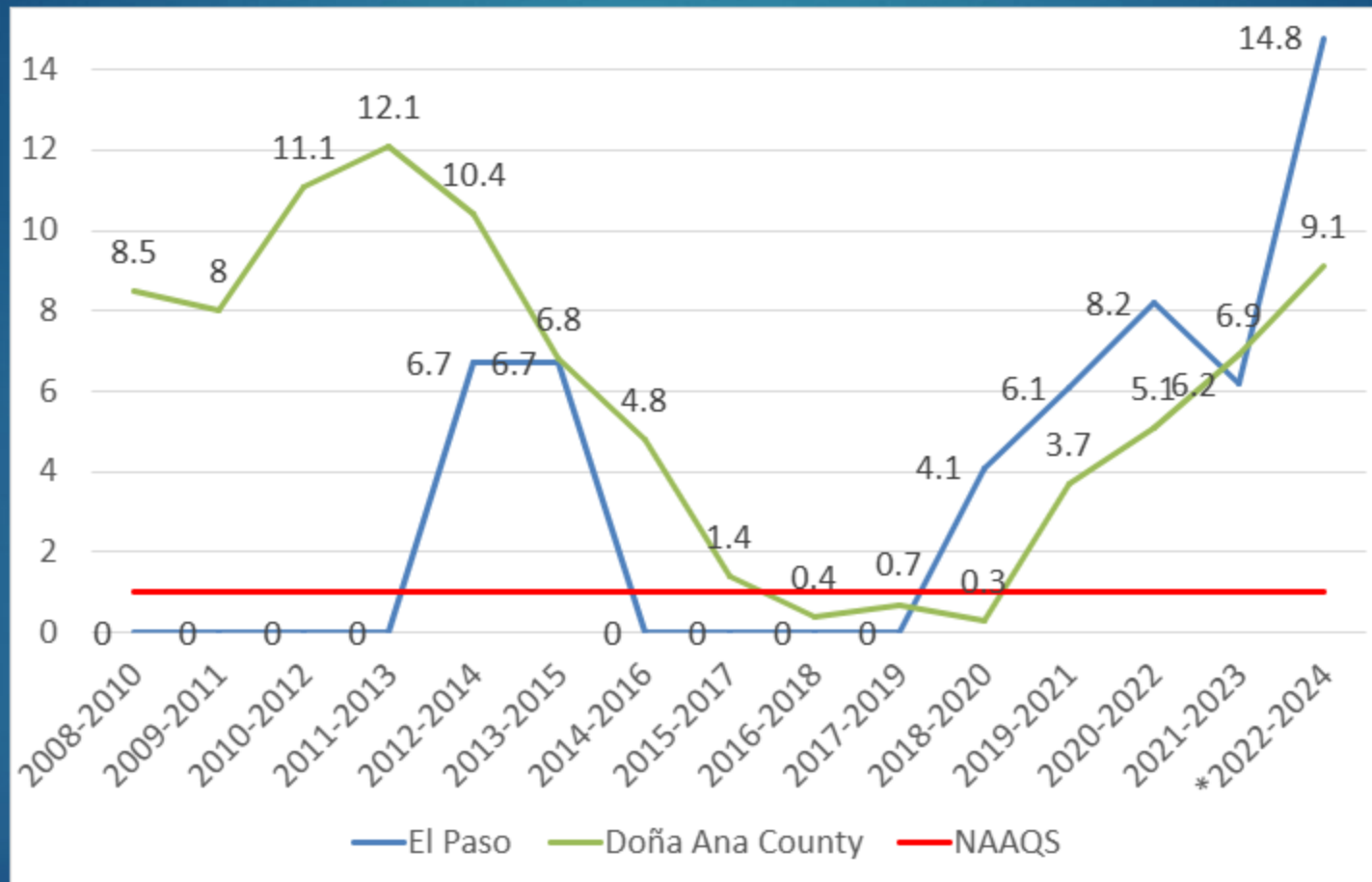
U.S. federal standard:
150 µg/m³ not to be exceeded more than once per
year on average over three years at any one monitor.

The maximum permissible limit in Mexico
for PM₁₀ is 70 µg/m³ on a 24-hour
average



PM₁₀ 24-Hour Design Values El Paso and Doña Ana County | 2008 – 2024

Estimated Number of Exceedances



*EPA exceptional events concurrences not reflected for Doña Ana County. -
EPA Currently has an EE packet on hand from NMED

Exceptional Events | Doña Ana County

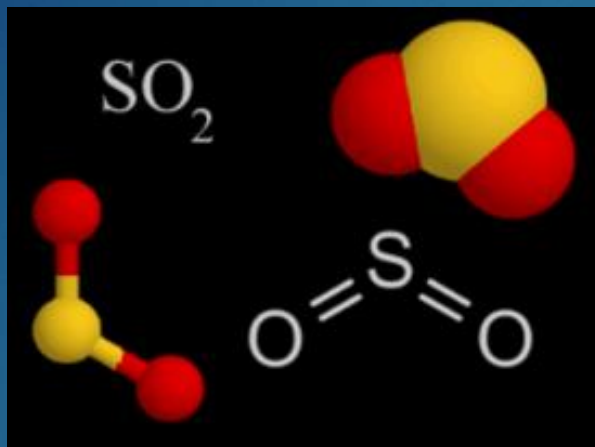
► High-Wind Blowing Dust PM₁₀ Exceedances of NAAQS

Year	Events	Observed Exceedances	Concentrations (µg/m ³)	EPA Review Process
2024	19	48	155-777	Initial Engagement
2023	6	14	160 - 346	Submitted
2022	15	30	157 - 879	Submitted
2021	15	31	157 - 769	Concurrence
2020	8	13	157- 504	Concurrence
2019	8	25	156-734	Concurrence
2018	7	18	158-326	Concurrence
2017	11	27	157-721	Concurrence
2016	11	28	162-689	Concurrence

Compliance with exposure limits: Annual arithmetic mean of PM 2025 in Ciudad Juarez

Parameter	Annual exposure limit	Annual mean IIT	Annual mean Clínica de Nutrición
PM_{2.5}	10 µg/m³	*15 µg/m³	*22 µg/m³
PM₁₀	28 µg/m³	*67 µg/m³	*144 µg/m³

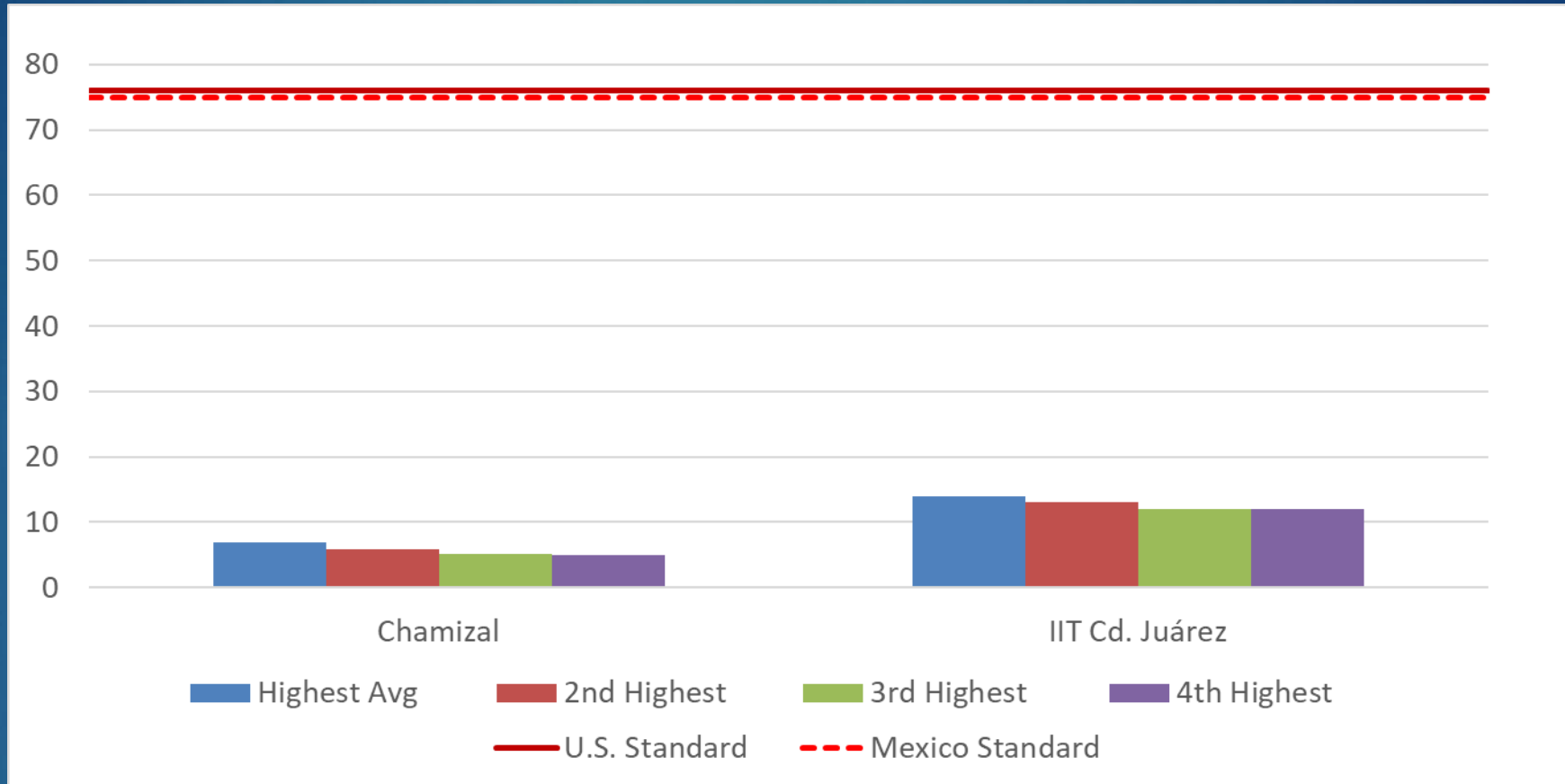
*Dust storm events are considered within this information.



Sulfur
Dioxide
SO₂
Dióxido de
azufre

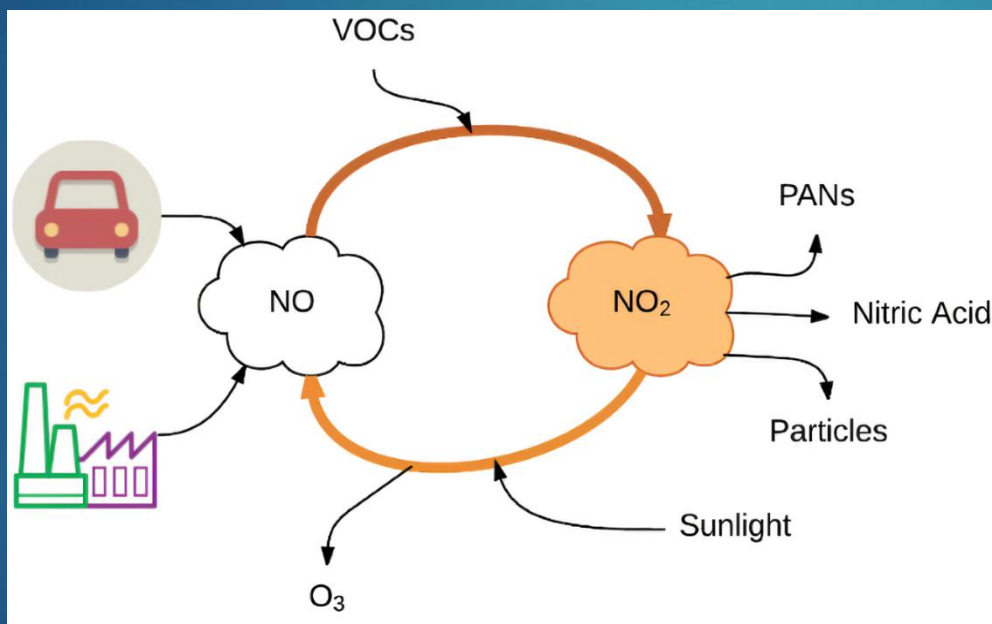
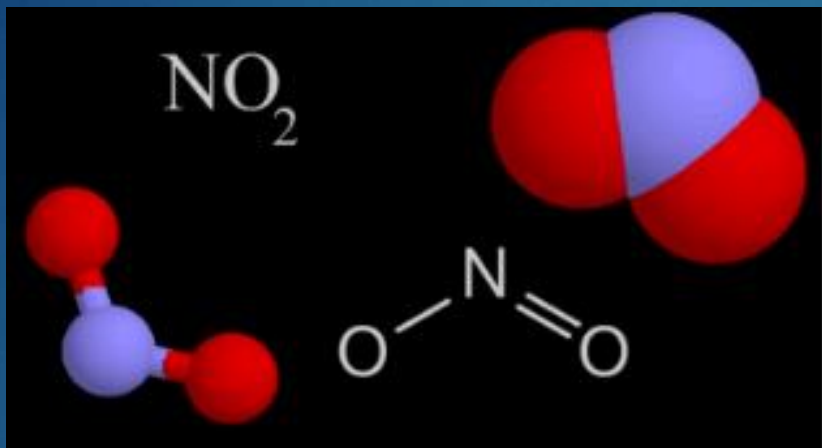
SO₂ 1-Hour Averages | Four Highest in ppb

El Paso and Ciudad Juárez | January 1 - November 1, 2025



U.S. federal standard:
76 ppb 99th percentile of 1-hour daily maximum concentrations, averaged over 3 years

The highest allowable limit in Mexico for SO₂ is 75 ppb in 1-hour average.



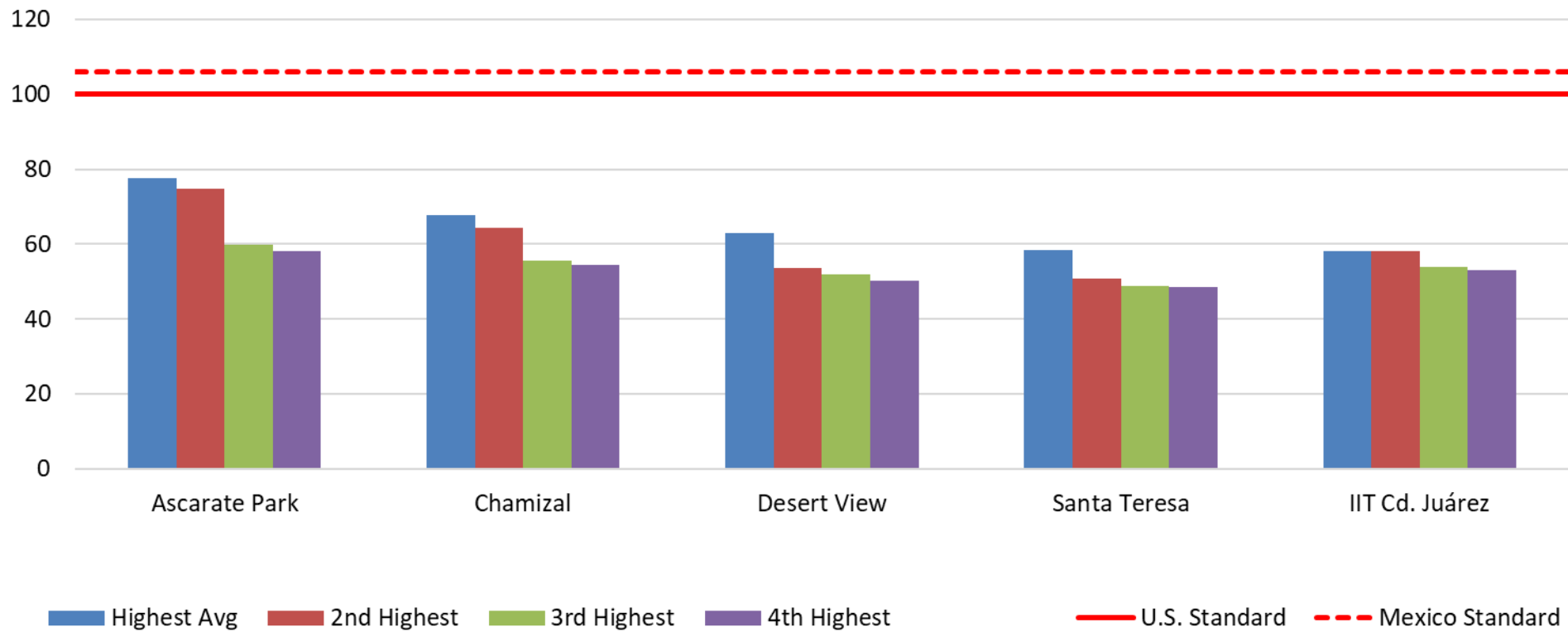
Nitrogen
Dioxide NO_2

Dióxido de
nitrogéno

NO₂ 1-Hour Averages (ppb) Four Highest El Paso del Norte January 1 - November 1, 2025

U.S. federal standard:
100 ppb 98th percentile of 1-hour daily maximum
concentrations, averaged over 3 years

The highest allowable limit in Mexico
for NO₂ is 106 ppb in
hourly averages.

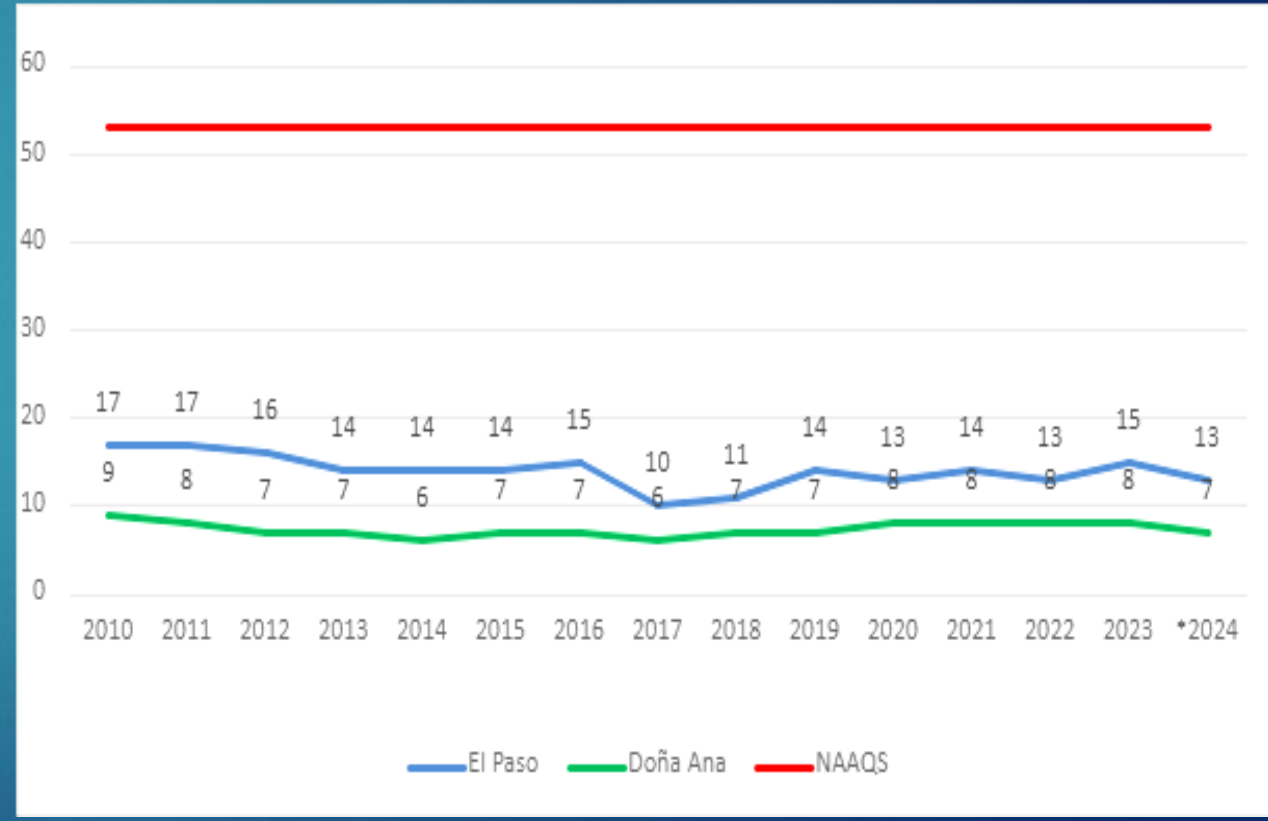
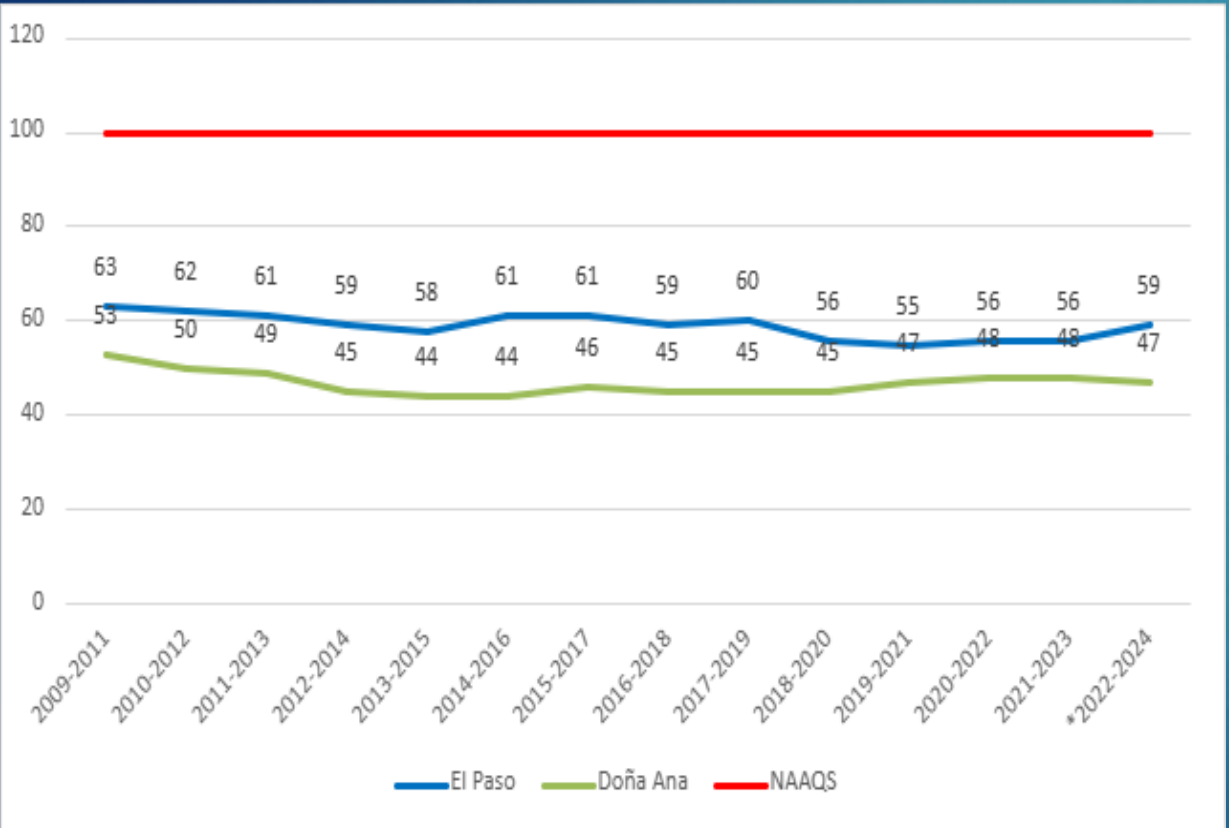


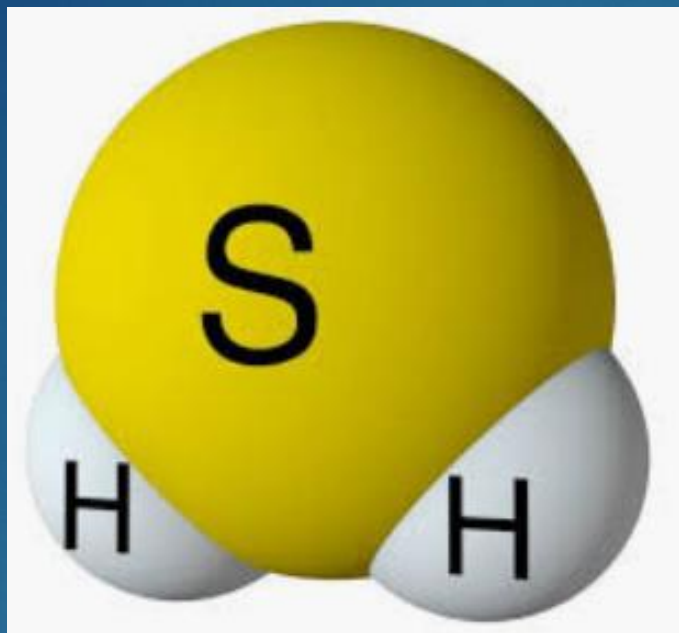
NO₂ Design Values 1-Hour Averages (ppb) El Paso & Doña Ana Counties

NO₂ Design Values Annual Mean (ppb) El Paso & Doña Ana Counties

The 1-hour NO₂ NAAQS (**100 ppb**) is the 3-year average of the annual 98th percentile of the daily maximum 1-hour average concentrations.

The annual NO₂ NAAQS (53 ppb) is the annual average concentration, averaged over three years.



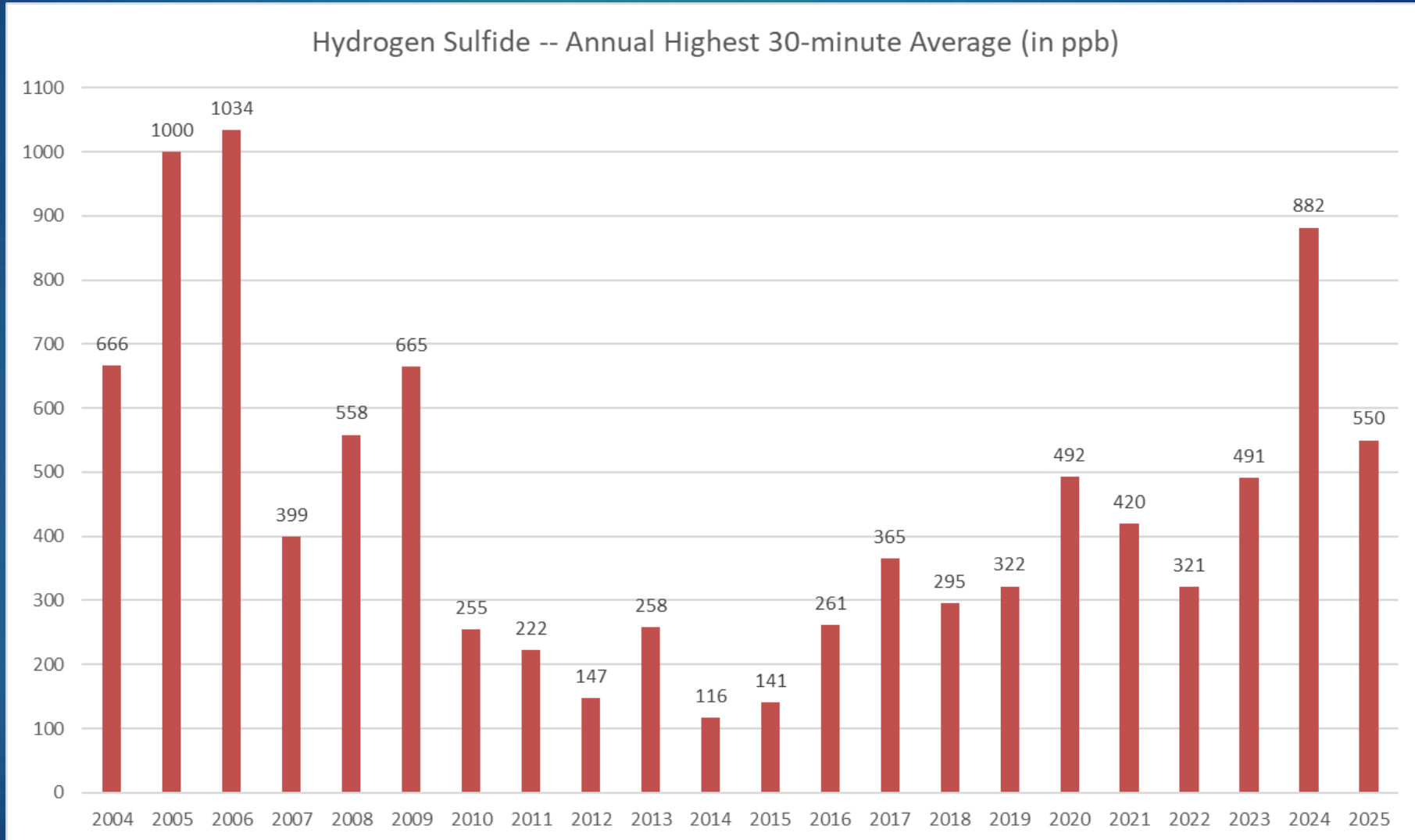


Hydrogen Sulfide (H₂S) Sulfuro de hidrógeno

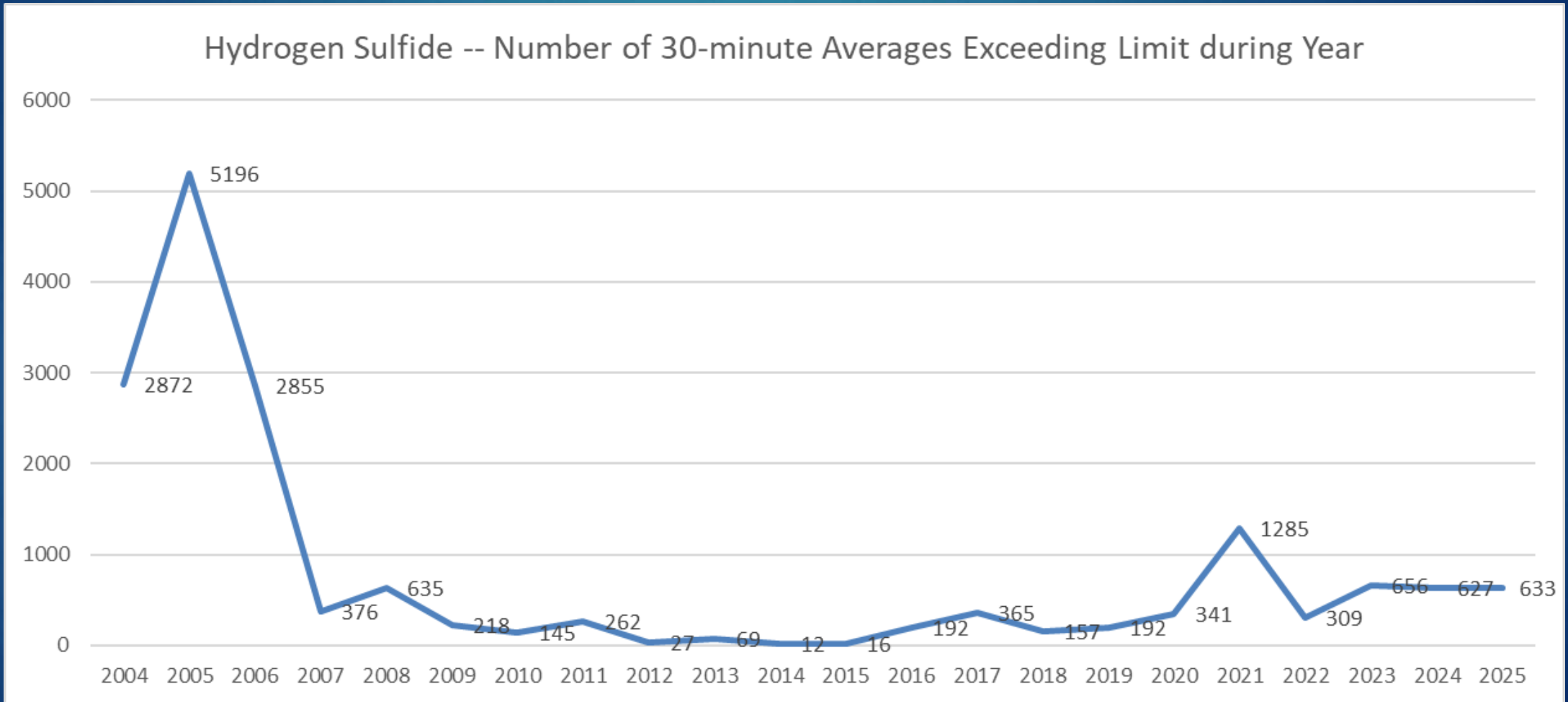
Breakage of animal, plant, and human waste



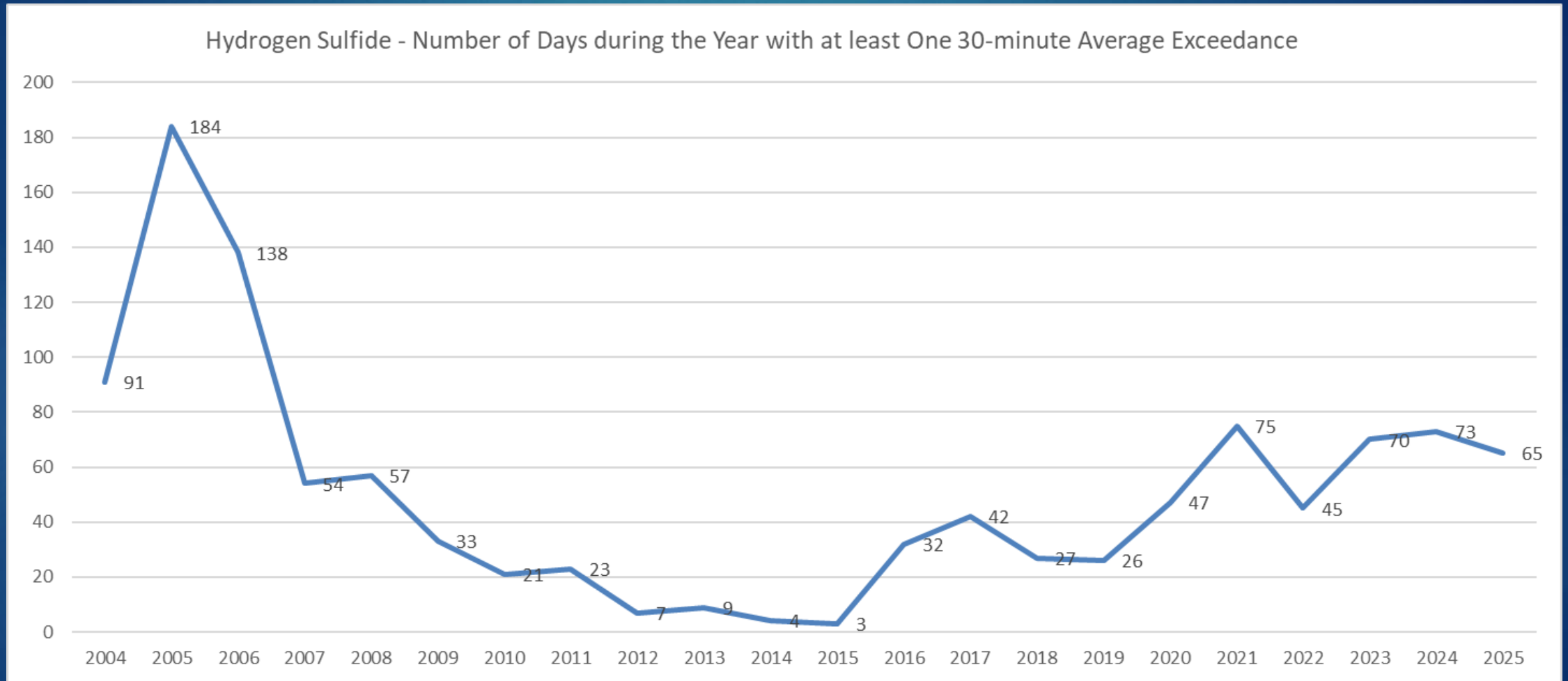
Hydrogen Sulfide | 30-Minute Averages (ppb) Highest Value at “Lower Valley” Monitor 2004-2025



Hydrogen Sulfide | 30-Minute Averages (ppb)
Number of Exceedances at “Lower Valley” Monitor
2004-2025



Hydrogen Sulfide | 30-Minute Averages Number of Days with Exceedances at “Lower Valley” Monitor 2004-2025



Questions?

¿Preguntas?

Links to publicly available U.S. data:

- [EPA Air Trends](#)
- [Design Value Interactive Tool | US EPA](#)
- [Our Nation's Air 2023 \(epa.gov\)](#)
- [Daily Mean Values for Calendar Year 2023 \(texas.gov\)](#)

TCEQ
Border Affairs
ba@tceq.texas.gov



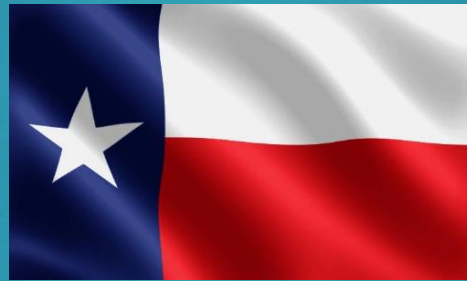
NMED
Armando Paz
armando.paz@state.nm.us



SDUE
francisco.gomez@chihuahua.gob.mx

Gobierno Municipal
ricardoaragonb@gmail.com





Thank you!
Gracias!