

ENVIRONMENTAL INJUSTICE & IMPACTS IN BARRIO CHAMIZAL:

Organizing women to create & defend community





Mapping Inequality Redlining in New Deal America

El Paso, TX

Areas by Grade

Area	Grade
12%	A "Best"
36%	B "Still Desirable"
24%	C "Definitely Declining"
28%	D "Hazardous"

Demographics

96,810	Total Population (1940)
74.7%	Native-born white
22.7%	Foreign-born white
2.3%	African American

El Paso, TX

D2 D3 D4

Compare All Show Scan

This large area is the concentration of Mexican peasants which constitute the largest class of Mexican laborers. All of the shacks therein are very poor and there is positively no demand of any kind for property in this section. This area, as well as all other Mexican sections, is avoided by mortgage lenders.

El Paso, TX

D3 D4 D5

Compare All Show Scan

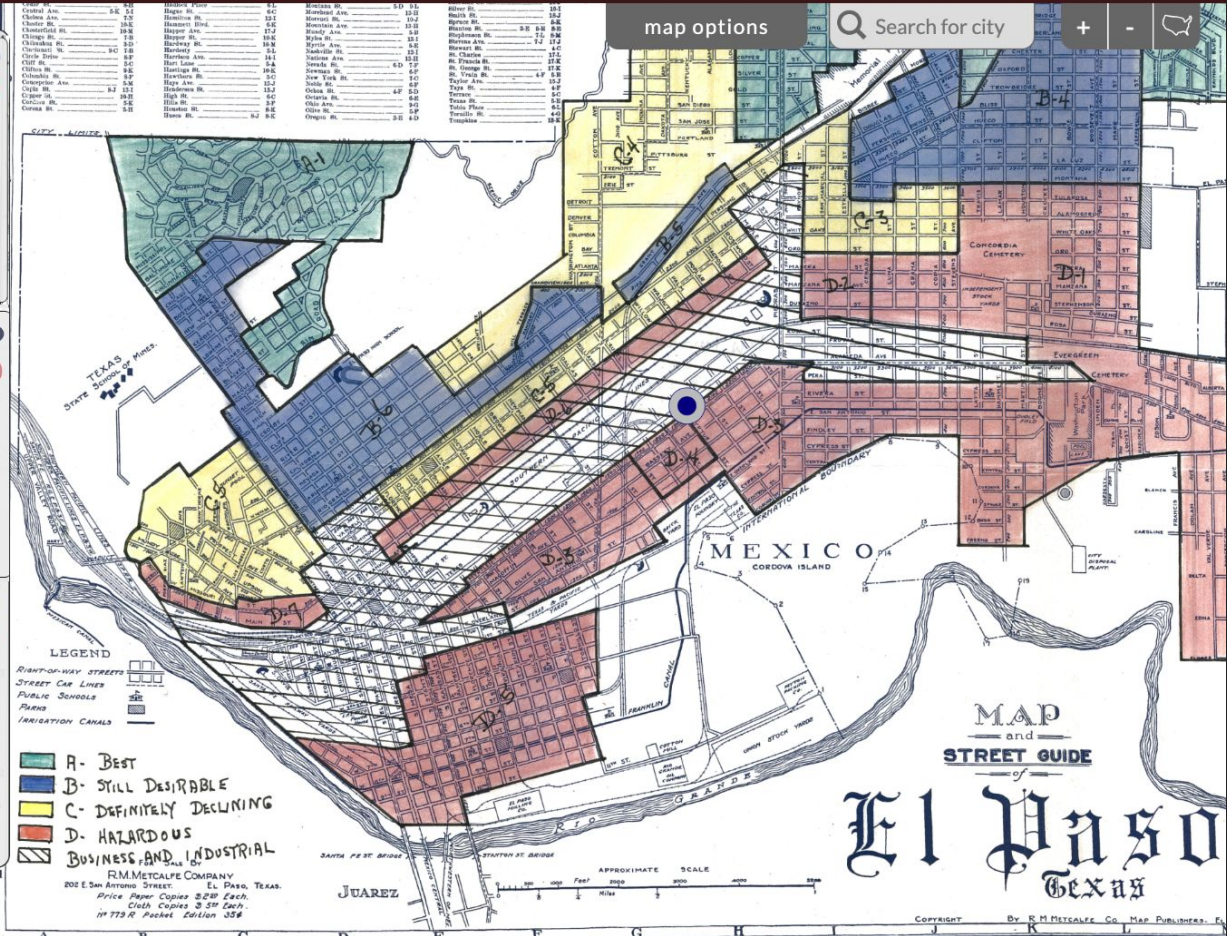
This small area is also a negro concentration point. It is also occupied by Mexicans. There is little to distinguish adjoining D-3 except the fact that negroes have centered therein.

El Paso, TX

D4 D5 D6

Compare All Show Scan

This is the Mexican tenement section. The district is occupied entirely by Mexicans and other foreigners. In this district are a large number of tenement houses, all cheap and in a bad state of repair.



Central Ave.	9.0	5.3	Steger St.	8.0	5.1	St. Louis St.	10.0
Chapin Ave.	10.0	5.2	Stewart St.	8.0	5.1	St. Mary St.	10.0
Cherokee St.	10.0	5.2	Stewart St.	8.0	5.1	St. Paul St.	10.0
Cherokee St.	10.0	5.2	Stewart St.	8.0	5.1	St. Paul St.	10.0
Cherokee St.	10.0	5.2	Stewart St.	8.0	5.1	St. Paul St.	10.0
Cherokee St.	10.0	5.2	Stewart St.	8.0	5.1	St. Paul St.	10.0
Cherokee St.	10.0	5.2	Stewart St.	8.0	5.1	St. Paul St.	10.0
Cherokee St.	10.0	5.2	Stewart St.	8.0	5.1	St. Paul St.	10.0
Cherokee St.	10.0	5.2	Stewart St.	8.0	5.1	St. Paul St.	10.0
Cherokee St.	10.0	5.2	Stewart St.	8.0	5.1	St. Paul St.	10.0

map options

Search for city

+ -

BARRIO CHAMIZAL

8,000+
residents live
in Barrio
Chamizal-
a dominantly
Spanish-
speaking,
immigrant
community.

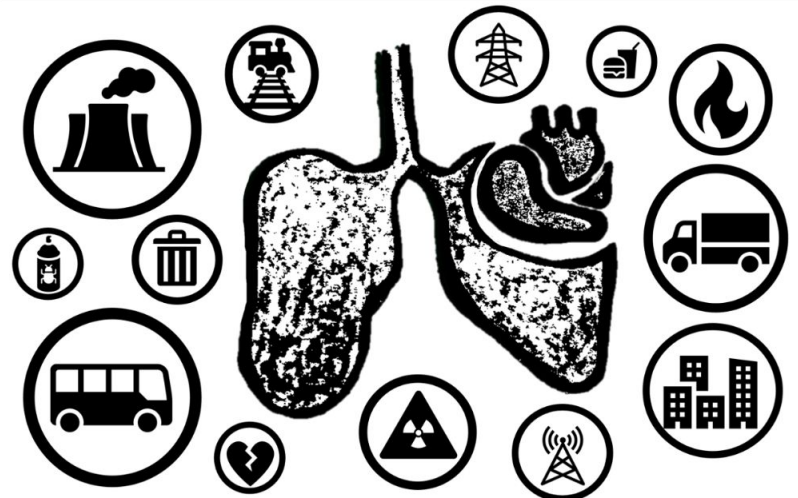
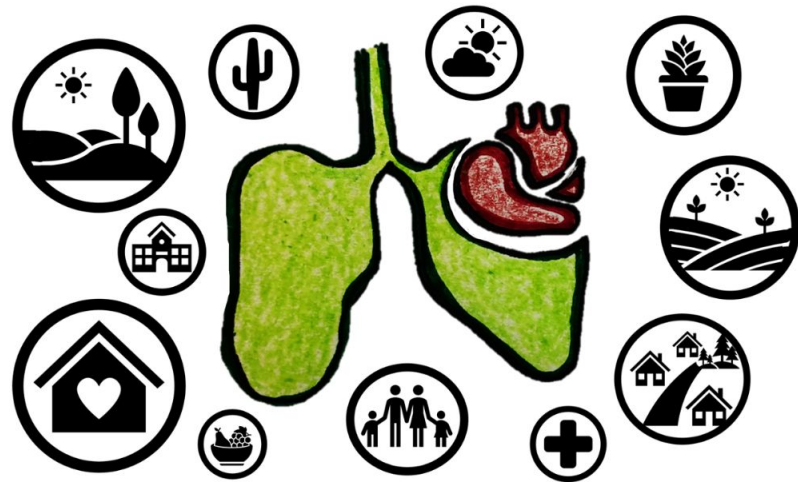


Legend:

- A. Café Mayapan
- B. Beall Elementary School
- C. Zavala Elementary
- E. Bowie High School
- F. EPISD Bus Hub
- G. PCM Recycling
- H. Salazar Apartment Playground
- I. Douglass Elementary School
- J. Chamizal Community Center

BARRIO CHAMIZAL is the poorest neighborhood in the United States and is home to the highest concentration of immigrant families in El Paso, Texas.

96.9% of Chamizal residents Hispanic, **92.8%** are primarily Spanish speaking, **81.6%** are low income, **58.1%** of residents live below the poverty line and **68.3%** of households with children under 18 are headed by women.



BARRIO CHAMIZAL ENVIRONMENTAL INJUSTICE HEALTH STATS:

Residents of Barrio Chamizal are exposed to **79%** more diesel **particulate matter** than Texas and **81%** more than El Paso .

In Barrio Chamizal, **22%** of our population suffers from **respiratory issues or cancer risk**, while other areas in El Paso have lower percentages of these conditions.

The median household income of Barrio Chamizal is less than \$25,000/year in a highly populated immigrant community, thus access to healthcare is limited and many of the health disparities are not addressed or accounted for. **The health disparities in the Chamizal are obvious, yet rarely diagnosed, documented or treated.**

The current data collected by state agencies is limited and misleading, as verified by our recent court proceedings to address the EPA's previous misclassification of attainment in El Paso, TX.

The EPA acknowledged the original analysis was flawed and reclassified El Paso as "marginal" nonattainment. El Paso is in **nonattainment for ozone** and about to be in **nonattainment for Particulate Matter**.

'It took us bringing a lawsuit to produce the facts. There is no one in the state of Texas looking out for our community when it comes to environmental hazards.'



LA MUJER OBRERA
EL PASO, TEXAS



Soil Testing for Various Heavy Metals in and around Some Schools of El Paso Independent School District (EPISD)

Heavy metal concentrations in soil, federal and state guidelines for metals in soil, and locations of samples are presented in the next several tables and figures. Results were collected from Douglas, Zavala, and Beall Elementary Schools, and Bowie High School, in addition to some nearby locations.

Table 1: Concentration of certain heavy metals at schools and various other locations in El Paso, measured by digestion and chemical analyses by ICP-MS.

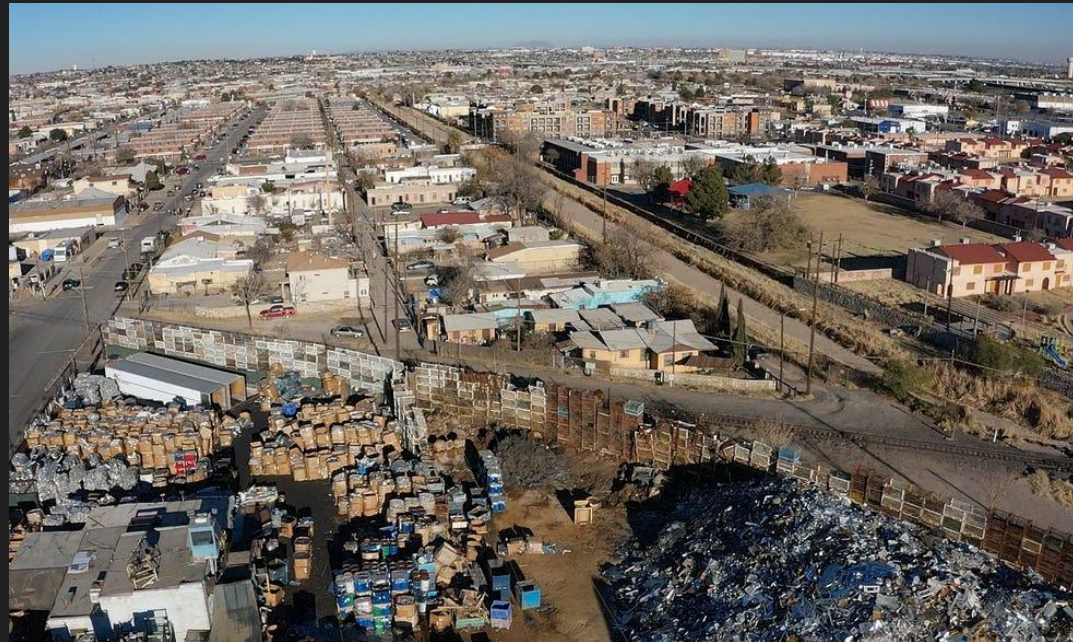
Location	Lead (Pb) ppm	Arsenic (As) ppm	Zinc (Zn) ppm
Douglas Elementary School			
D1	64	6	87
D2	135	8	107
D3	318	12	292
D4	97	8	107
D5	99	7	124

Douglas Elementary School

The following are the five location points from where soil core samples were retrieved at Douglas Elementary School



Now Reading: El Paso School Consolidation Exposes More Kids to Lead...





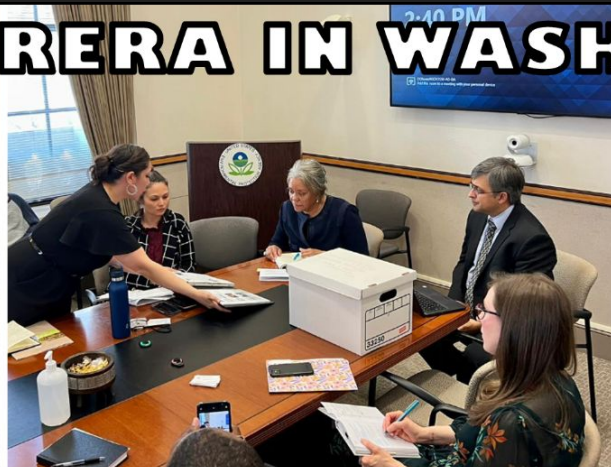




LA MUJER OBRERA IN WASHINGTON D.C.



La Mujer Obrera at The U.S. Capitol



We hand delivered 500+ testimonies from communities of color to the EPA



We met with The White House Climate Policy Office, stood with the Climate Action Campaign at a Health press conference & we urged Congresswoman Escobar to sign-on to a letter demanding stricter standards on SOOT & SMOG

