

# Addressing Environmental Issues on the U.S.-Mexico Border



June 2019

## Established in 1994

- ◆ **Mandate:** Develop and finance environmental infrastructure along the U.S.-Mexico border:
  - Review and certify infrastructure projects located within 100 km north and 300 km south of the border that improve the well-being of the population
  - Provide loans and grants for their implementation
  - Offer technical assistance for project development
- ◆ **NADB and BECC** merged in November 2017
- ◆ **Structure:** Owned and governed equally by the Governments of the United States and Mexico
- ◆ **Offices:** San Antonio, TX and Ciudad Juarez, Chihuahua
- ◆ **Ratings:** Aa1 - Moody's; AA – Fitch

# Governance

## Board of Directors

- ◆ NADB has a ten-member Board of Directors, with an equal number of representatives from the U.S. and Mexico

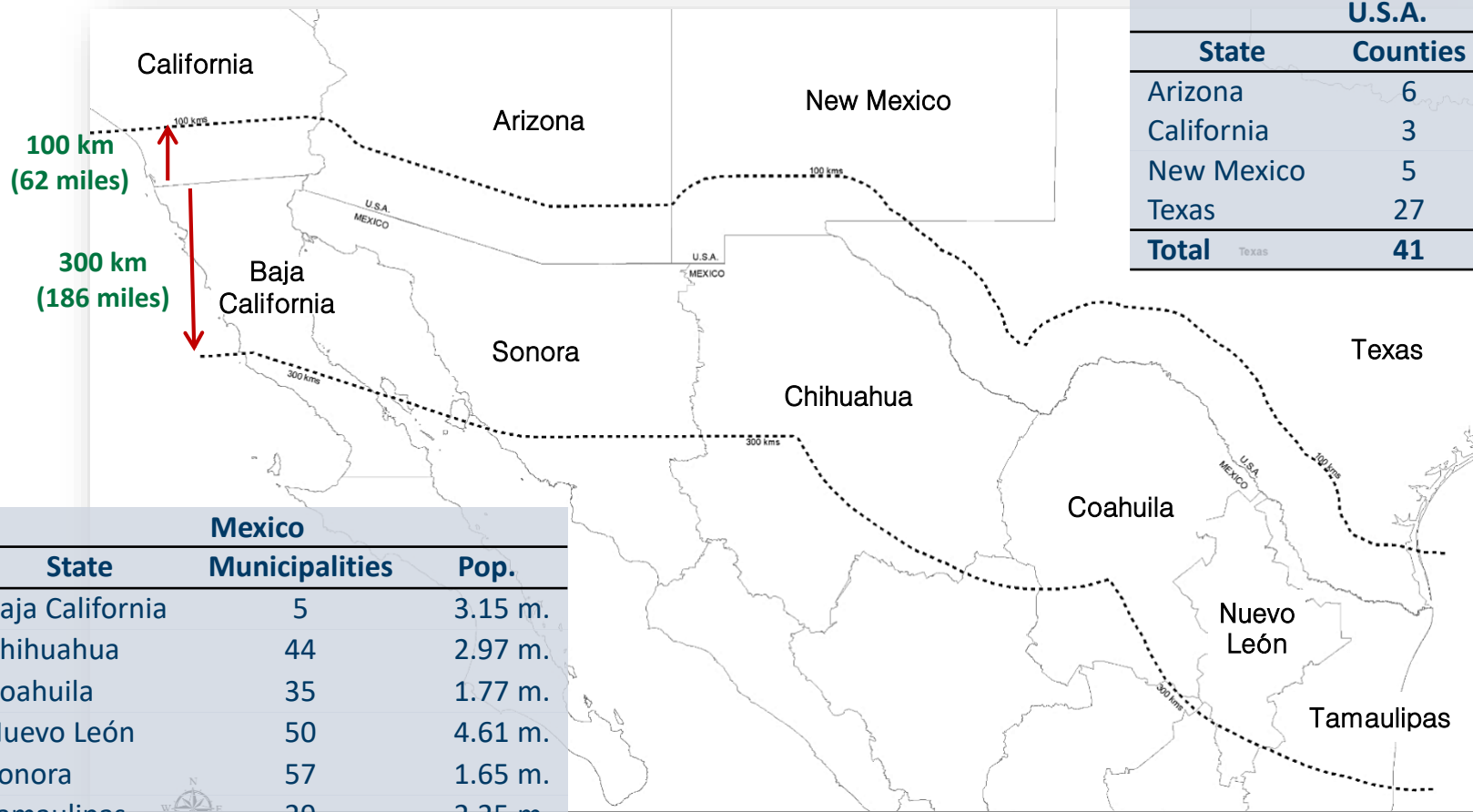
U.S. Members	Mexico Members
<i>Secretary of the Treasury</i>	<i>Secretary of Finance and Public Credit (SHCP)</i>
<i>Secretary of State</i>	<i>Secretary of Foreign Affairs (SRE)</i>
<i>Administrator of the Environmental Protection Agency</i>	<i>Secretary of the Environment and Natural Resources (SEMARNAT)</i>
<i>U.S. Border State Representative</i>	<i>Mexican Border State Representative</i>
<i>U.S. Border Public Representative</i>	<i>Mexican Border Public Representative</i>



# Jurisdiction

## U.S.- Mexico Border Region

- ◆ Eligible projects must be located within **100 km (62 miles) north** and **300 km (186 miles) outh** of the U.S.-Mexico border

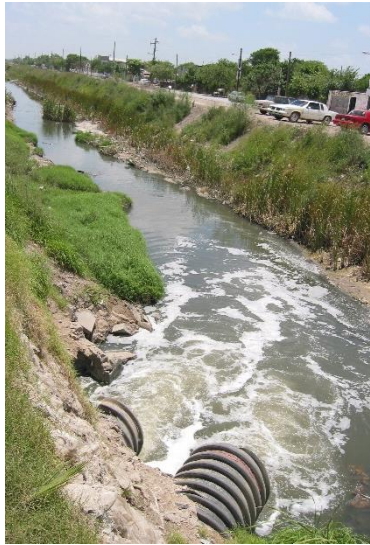


U.S.A.		
State	Counties	Population
Arizona	6	0.91 m.
California	3	3.20 m.
New Mexico	5	0.18 m.
Texas	27	2.05 m.
<b>Total</b>	<b>41</b>	<b>6.34 m.</b>

Mexico		
State	Municipalities	Pop.
Baja California	5	3.15 m.
Chihuahua	44	2.97 m.
Coahuila	35	1.77 m.
Nuevo León	50	4.61 m.
Sonora	57	1.65 m.
Tamaulipas	29	2.25 m.
<b>Total</b>	<b>220</b>	<b>16.41 m.</b>

# Eligible Sectors

## Types of Projects



**Water and Sewage**

- ◆ Water treatment and distribution
- ◆ Wastewater collection, treatment and reuse
- ◆ Water conservation
- ◆ Storm drainage



**Residential, Industrial and Hazardous Waste**

- ◆ Sanitary landfills
- ◆ Collection & disposal equipment
- ◆ Dumpsite closure
- ◆ Recycling
- ◆ Site remediation
- ◆ Toxic waste disposal



**Air Quality**

- ◆ Street paving and other roadway improvements
- ◆ Ports of entry
- ◆ Public transportation
- ◆ Industrial emissions



**Clean / Renewable Energy**

- ◆ Solar
- ◆ Wind
- ◆ Biofuels
- ◆ Biogas/methane capture
- ◆ Hydroelectric
- ◆ Geothermal



**Energy Efficiency**

- ◆ Public lighting
- ◆ Building retrofits
- ◆ Equipment replacement
- ◆ Water utilities

## Project Financing and Technical Assistance

### Loans

- ◆ Up to 85% of project costs
- ◆ Competitive fixed or floating rates
- ◆ Terms of up to 25 years
- ◆ Technical support and project structuring services

### Grants

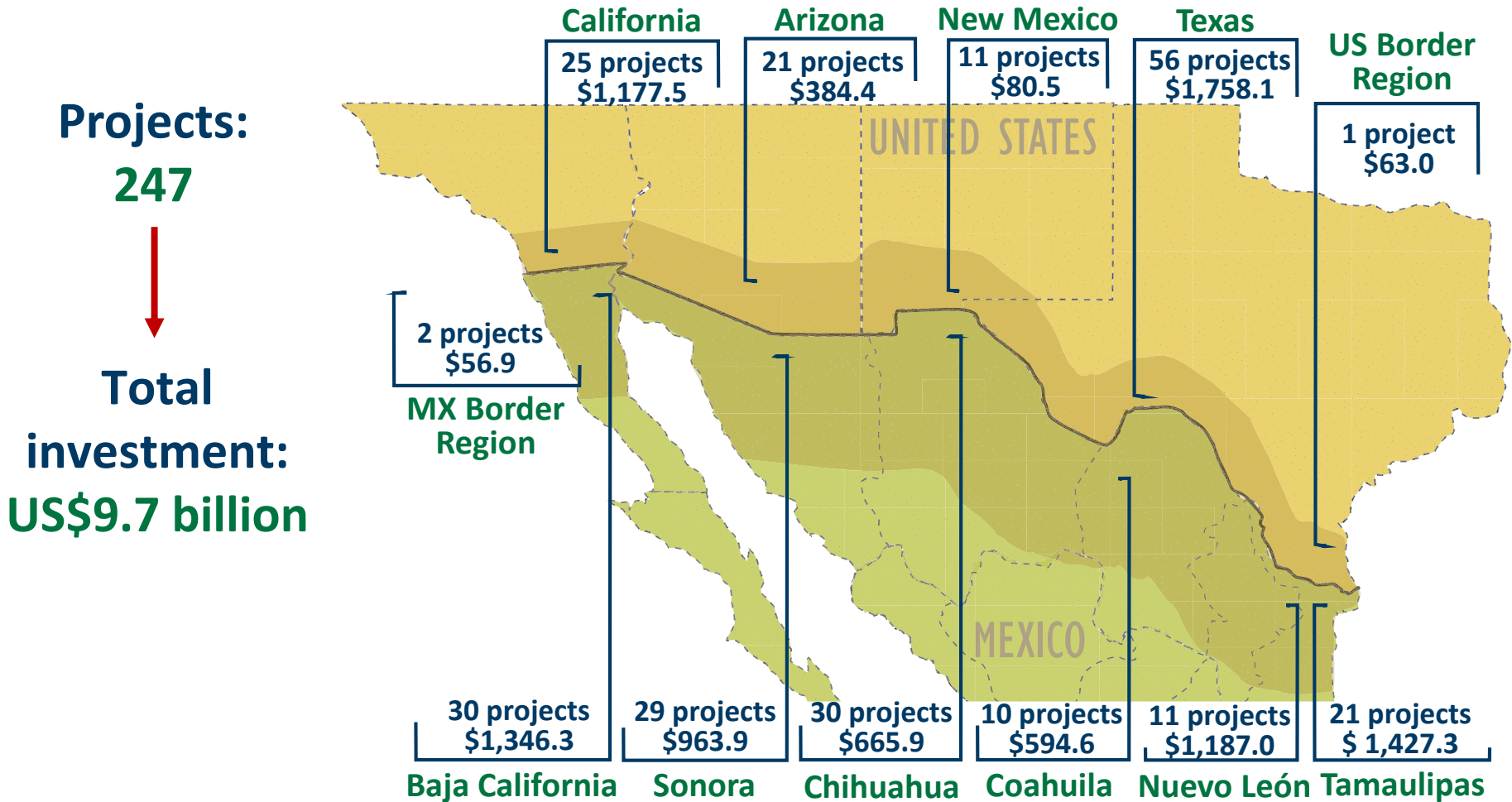
- ◆ Limited grants for communities where debt financing is not a viable option:
  - EPA-funded Border Environment Infrastructure Fund (BEIF)
  - NADB-funded Community Assistance Program (CAP)

### Technical Assistance

- ◆ Support for project development:
  - Final design and related studies
  - Financial closing, rate studies
- ◆ Capacity-building through seminars and workshops
- ◆ EPA-funded Border 2020

# Certified Projects with Financing

September 30, 2018



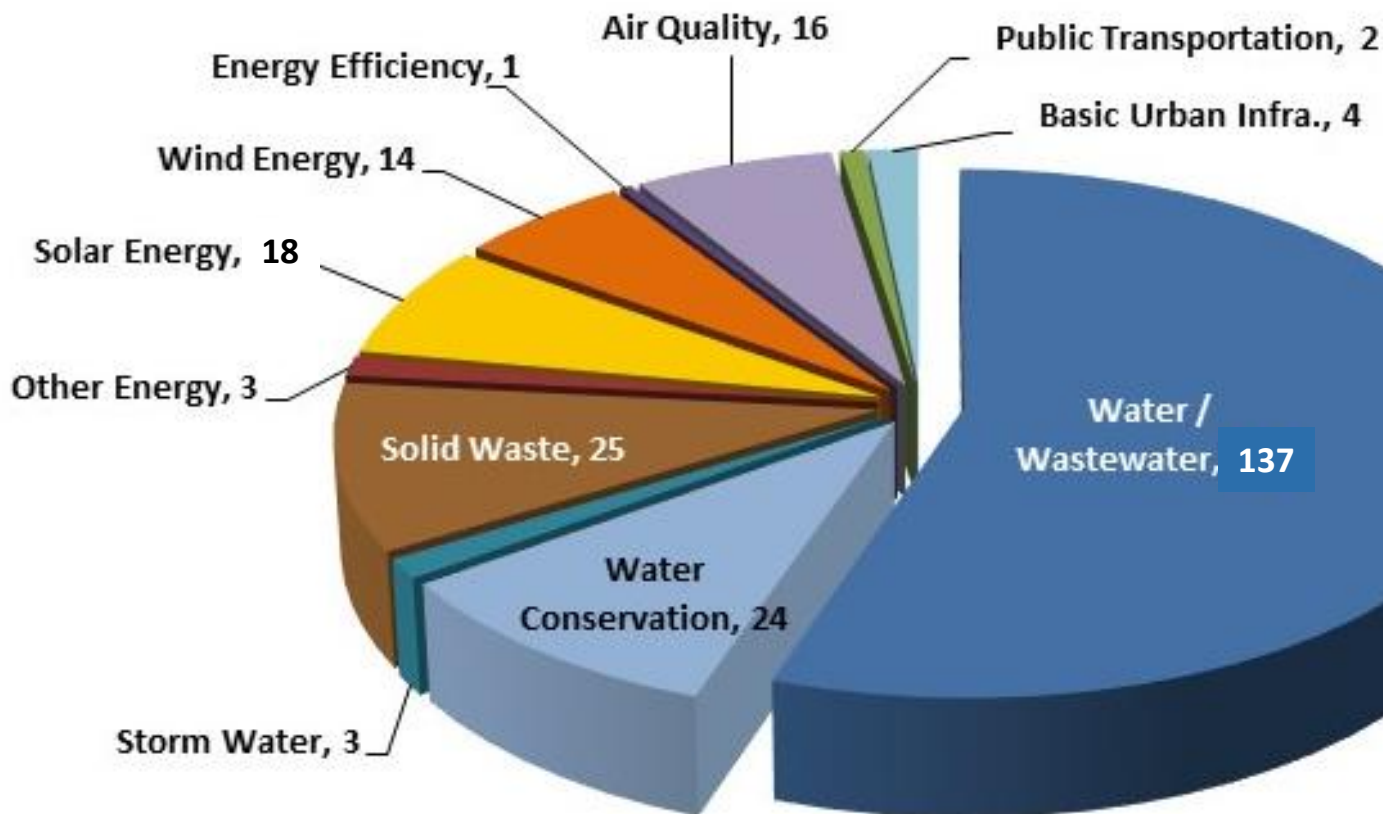
# Certified & Funded Projects by Sector

September 30, 2018

**247**  
Projects



**US\$9.7 billion**  
Total investment



# Outputs of Completed Projects

March 31, 2018



- ◆ 22 water treatment plants and 37 water distribution systems
- ◆ 53 wastewater treatment plants and 89 wastewater collection systems
- ◆ 22 water conservation projects
- ◆ 14 municipal landfills built or expanded and 12 dump sites closed
- ◆ 7.43 million square meters of roads paved and 230 km of rehabilitated roadways
- ◆ 15 solar plants, 12 wind farms, 1 landfill waste-to-energy facility and 1 cogeneration facility, with 1,917 MW of renewable energy generation capacity installed

# Outcomes of Completed Projects



- ◆ 8.5 million people benefitted from improved water and wastewater services
- ◆ 13,833 L/s of new or improved wastewater treatment capacity
- ◆ 406.4 million m<sup>3</sup> per year of water saved in irrigation districts
- ◆ 3.2 million people benefitted from improved solid waste services, including collection and disposal of 1,550 tons/day
- ◆ 5.4 million people benefited from street paving by reducing particulate matter emissions generated by vehicle traffic
- ◆ 6,435.5 GWh/year of renewable energy, equivalent to electricity consumption of 773,380 homes and displacing 3.2 Million ton CO<sub>2</sub>/year
- ◆ Various economic benefits to communities along the border, such as new employment opportunities, additional income, higher tax collection, and infrastructure to support economic development

As of September 30, 2018